

unisub
From Bare to Brilliant™

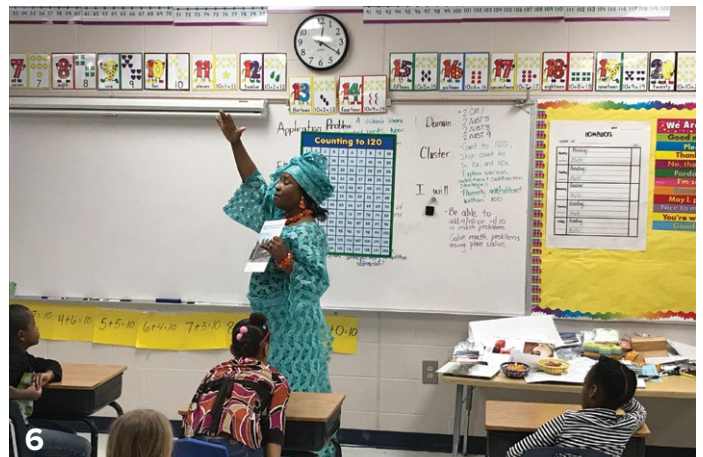


ChromaLuxe[®]
True to your vision[®]

2018 CATALOG

BEHIND THE SCENES

Around the world with Universal Woods' team members



1. Our team members in Belgium wore pink to bring Breast Cancer Awareness to our team and the community in October.
2. One team member lines up an aluminum panel before sending it through the shear to be cut into smaller parts.
3. Universal Woods team members at the Louisville, KY manufacturing plant pause in the midst of a busy day for a group picture.
4. A team member at the (Fiberglass Reinforced Plastic) Router is operating the router and producing products to be sent out to our distributors.
5. Our team member in Australia promotes one of our brands, ChromaLux, while sidecar racing in a competition.
6. One team member teaches a class a traditional Nigerian song during an "Around the World" event supported by our Adopt-A-Class team.

SUBLIMATION

SCIENCE ON HARD SURFACES

You may have learned in chemistry that sublimation involves a substance that changes from a solid to a gas then back to a solid without ever becoming a liquid. In the hard surface sublimation industry, an image is printed onto transfer paper using dye-based inks and then transferred onto a specially-coated surface with heat and pressure. We manufacture bare products with a specialized formulated coating, and you sublimate any image onto those products. If you've never heard of sublimation, here's something you may not know: getting started with sublimation on your own is easy! All you need is a computer, a printer with sublimation inks, transfer paper, a heat press and your Unisub and ChromaLuxe products.

3 SIMPLE STEPS TO SUBLIMATE

1 Choose any picture, illustration or other graphic image. Sublimation is great for any color combination from black and white to full color.

2 Insert the special sublimation ink cartridges into your printer. Print the image onto sublimation transfer paper designed for hard surface products. Tape the transfer paper to your product with heat tape.

3 Position your product on the heat press face up and apply pressure for the appropriate amount of time. Remove the transfer paper from the surface. Enjoy the wow!



WHAT CAN I DO WITH SUBLIMATED PRODUCTS?

The market for hard surface sublimation is rapidly expanding. There are numerous opportunities to grow and expand your business into new markets, such as personalized gifts, customized business products, schools, sports, professional photography, fine art markets and more. And that's just a sneak preview! Flip through our catalog for more details, tips and tricks about these market opportunities.

GET STARTED TODAY!

Contact an official distributor to get everything you need to start or grow your sublimation business today. Visit us online for more information at Unisub.com and ChromaLuxe.com


From Bare to Brilliant™


True to your vision®

SUBSTRATES

Universal Woods coats a variety of hard substrates including aluminum, MDF, hardboard and more. As an ISO 9001:2008 certified manufacturer, our products are manufactured and inspected to ensure the highest quality sublimatable products in the industry.

ALUMINUM

Used in: Ornaments, metal prints, name tags, key chains, and more

Finishes: Gloss White, Semi-Gloss White, Matte White, Gloss Clear, Semi-Gloss Clear, Matte Clear

Thicknesses: 0.045" / 1.14 mm and 0.03" / 0.76 mm



MEDIUM DENSITY FIBERBOARD (MDF)

Used in: Wood photo panels, plaques, picture frames, and more

Finishes: Gloss White, Semi-Gloss White

Thicknesses: 0.625" / 15.8 mm and 0.5" / 12.7 mm



HARDBOARD (HB)

Used in: Desktop photo easel panels and hinged panel set, picture frames, signs of life, puzzles, coasters, serving trays, and more

Finish: Gloss White

Thickness: 0.25" / 6.35 mm and 0.125" / 3.18 mm



MOISTURE RESISTANT MEDIUM DENSITY FIBERBOARD (MR-MDF)

Used in: Table tops

Finish: Semi-Gloss White

Thickness: 0.75" / 19.05 mm



STEEL

Used in: Message boards and signage

Finish: Gloss White

Thickness: 0.023" / 0.58 mm

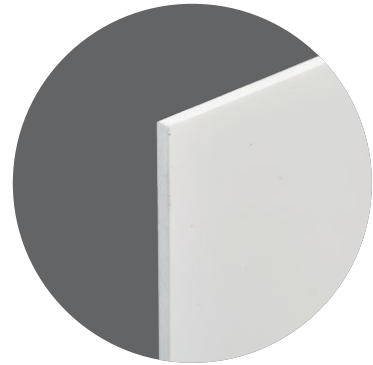


FIBERGLASS REINFORCED PLASTIC (FRP)

Used in: Name badges, magnets, bag tags, and more

Finishes: Gloss White, Matte White

Thickness: 0.09" / 2.29 mm



NATURAL WOOD, MDF WITH MAPLE VENEER FINISH

Used in: Wood photo panels, picture frames, bag tags and ornaments

Finish: Matte Clear

Thickness: 0.625" / 15.88 mm and 0.156" / 3.9 mm

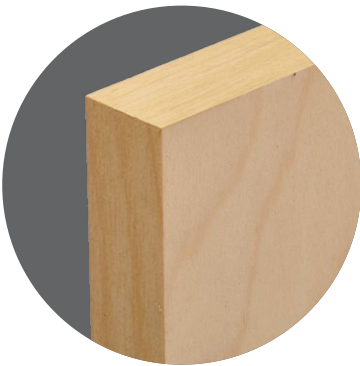
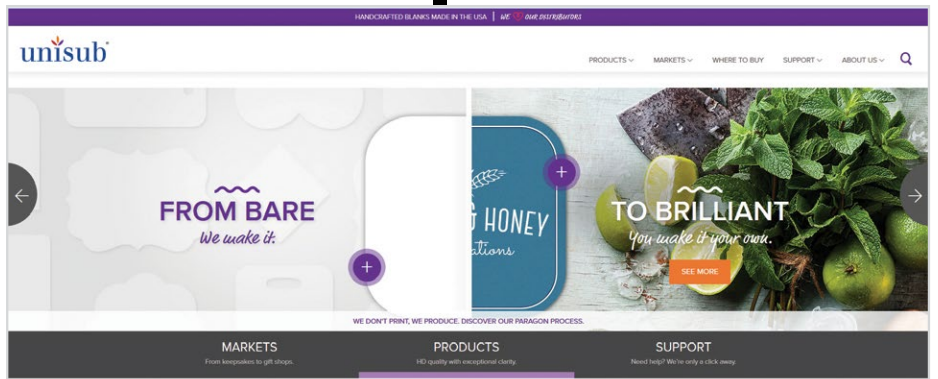
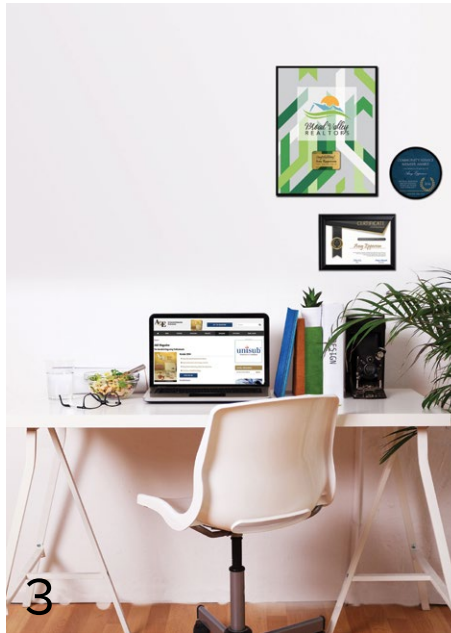


TABLE OF CONTENTS



- UNISUB START.....2
- AWARDS/PLAQUES.....3
- BAG TAGS.....5
- BASKETBALL GOAL.....7
- BOOKMARKS.....7
- BUSINESS CARD HOLDER.....7
- CLIPBOARDS.....8
- CLOCKS.....9
- COASTERS.....11
- COASTER PUZZLE.....12
- COAT HANGERS.....12
- DOOR HANGER.....13
- JEWELRY.....13
- ID tags.....13
- Bezel pendants & necklace.....14
- Button.....14
- Lapel pin.....14
- Cuff bracelets & bender.....15
- Scallop edge charms.....16
- Accessory pieces.....16
- KEEPSAKE BOXES & CASE.....17
- KEY CHAINS.....19
- KEY HANGER.....20
- LICENSE PLATES, FRAMES & STRIPS.....21
- MAGNETS.....23
- MESSAGE BOARDS/SIGNS/
PLACEMATS.....25
- NAME BADGES.....26
- NAME PLATE/INSERT.....28
- ORNAMENTS.....29
- PET TAGS.....31
- PICTURE FRAMES.....32
- PUZZLES.....33
- SERVING TRAYS.....34
- SIGNS/DASH PLATES.....35
- STICKY NOTE HOLDERS.....37
- TRAILER HITCH COVERS.....38
- TILES.....39
- TROPHY DISK INSERTS.....39
- SHEETSTOCK.....41
- STARTER KITS.....43
- PRODUCTION JIGS.....44

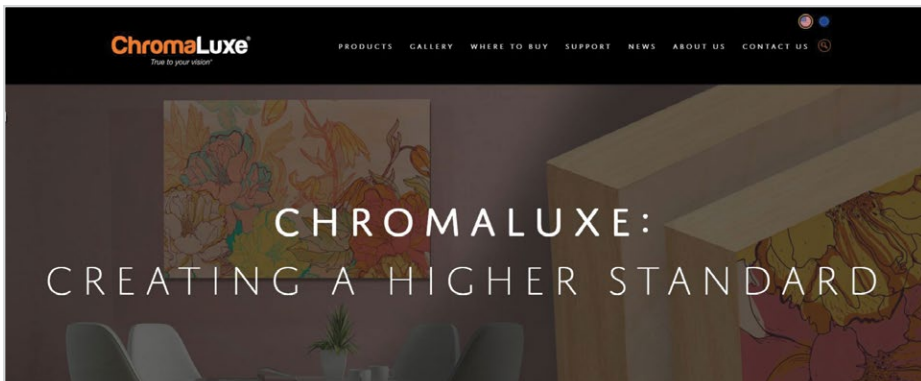


Visit our website at unisub.com for a variety of product information and sublimation support.

TABLE OF CONTENTS



CHROMALUXE START.....	46
HD METAL PRINTS.....	47-49
CHROMALUXE EXT.....	50
CONNECTIONS HANGING SYSTEM.....	52-54
CREATIVE BORDER METAL PRINTS.....	56
DISPLAYS.....	57-58
Silver easel.....	57
Aluminum hanging mount.....	57
Aluminum shadow mount display set.....	58
Black shadow displays.....	58
FRAMES.....	59
WOOD PHOTO PANELS.....	60
DESKTOP PHOTO PANELS.....	61-62
TABLE TOPS.....	63
FLOORING.....	64



Visit our website at chromaluxe.com for a variety of product information and support.



Becker

B

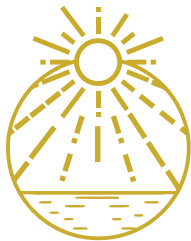
Becker

unisub[®]

From Bare to Brilliant™

There are more than 350 stocked items in the Unisub product line, sold to over 80 countries worldwide. As we develop and add new offerings to our product line, we are confident in our continual dedication to creating superior quality goods that will help to grow and sustain the sublimation industry.

On our website at unisub.com, you'll find links to free graphics, product templates, and profit producing business ideas to help grow your business, all of which incorporate a wide variety of our Unisub products. All of our Unisub bare (blank) products can be purchased through certified distributors located all over the world.



Fade Resistance



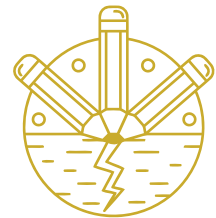
Flame Resistant



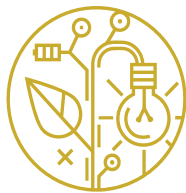
Moisture Resistant



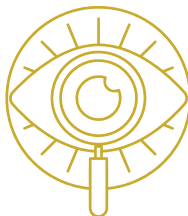
Chemical Resistant



Scratch Resistant



Eco-Friendly



Color Vibrancy



Finishes



PLAQUES & AWARDS

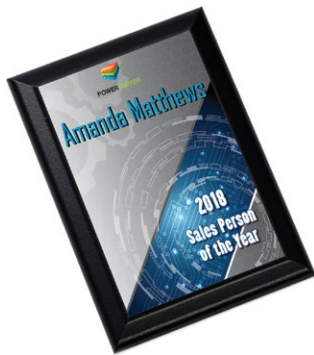
Recognition deserves attention – create lasting memories of achievements with full color plaques available in a variety of sizes and shapes.



Material: MDF **Finish:** Gloss White **Thickness:** 0.625" / 15.8 mm

CHERRY OGEE EDGE PLAQUES

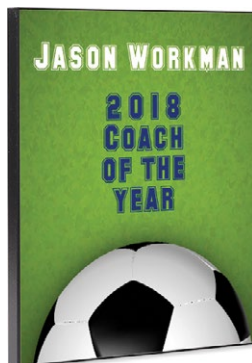
ITEM #	INTERIOR DIMENSIONS IN/MM	EXTERIOR DIMENSIONS IN/MM	QTY
5670	3.875" x 5.875" / 98.4 x 149.2 mm	5" x 7" / 127 x 177.8 mm	28
1005	4.875" x 6.875" / 123.8 x 174.6 mm	6" x 8" / 152.4 x 203.2 mm	21
1006	5.875" x 7.875" / 149.2 x 200 mm	7" x 9" / 177.8 x 228.6 mm	20
1007	6.875" x 8.875" / 174.6 x 225.4 mm	8" x 10" / 203.2 x 254 mm	14
1008	7.875" x 10.875" / 200 x 276.2 mm	9" x 12" / 228.6 x 304.8 mm	12



Material: MDF **Finish:** Gloss White **Thickness:** 0.625" / 15.8 mm

BLACK OGEE EDGE PLAQUES

ITEM #	INTERIOR DIMENSIONS IN/MM	EXTERIOR DIMENSIONS IN/MM	QTY
5669	3.875" x 5.875" / 98.4 x 149.2 mm	5" x 7" / 127 x 177.8 mm	28
1001	4.875" x 6.875" / 123.8 x 174.6 mm	6" x 8" / 152.4 x 203.2 mm	21
1002	5.875" x 7.875" / 149.2 x 200 mm	7" x 9" / 177.8 x 228.6 mm	20
1003	6.875" x 8.875" / 174.6 x 225.4 mm	8" x 10" / 203.2 x 254 mm	14
1004	7.875" x 10.875" / 200 x 276.2 mm	9" x 12" / 228.6 x 304.8 mm	12



Material: MDF **Finish:** Gloss White **Thickness:** 0.625" / 15.8 mm

BLACK FLAT EDGE RECTANGLE PLAQUE

ITEM #	DIMENSIONS IN/MM	QTY
5664	8"x10" / 203.2 x 254 mm	14

Material: HB Finish: Gloss White Thickness: 0.25" / 6.35 mm

CROSS PLAQUE

ITEM #	DESCRIPTION	DIMENSIONS IN/MM	QTY
5783	Mahogany cross with oval tile insert	7" X 11" / 177.8 X 279.4 MM	10
5726	Oval tile insert only	4.22" x 5.99" / 107.2 x 151.6 mm	20



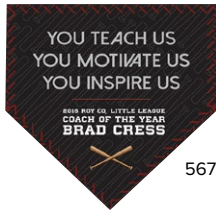
Material: MDF Finish: Gloss White Thickness: 0.625" / 15.8 mm

SPECIALTY SHAPED PLAQUES

ITEM #	DESCRIPTION	INTERIOR DIMENSIONS IN/MM	EXTERIOR DIMENSIONS IN/MM	QTY
5745	Shield, small	4.625" x 5.625" / 117.4 x 142.8 mm	5" x 6" / 127 x 152.4 mm	15
5616	Shield, large	7.125" x 8.875" / 180.9 x 225.4 mm	7.5" x 9.125" / 190.5 x 231.7 mm	6
5757	Football	5.875" x 10" / 149.23 x 254 mm	6" x 10" / 152.4 x 254 mm	12
5679	Home plate, small	5.625" x 5.75" / 142.8 x 146 mm	6" x 6" / 152.4 x 152.4 mm	15
5680	Home plate, large	9.75" x 9.75" / 247.6 x 247.6 mm	10" x 10" / 254 x 254 mm	12
5765	Round	7.625" / 193.6 mm	8.125" / 206.3 mm	12



5616



5679



5757

Material: MDF Finish: Gloss White Thickness: 0.75" / 19.05 mm

EXTRA LARGE PLAQUES/CLOCK PLAQUE

ITEM #	DESCRIPTION	INTERIOR DIMENSIONS IN/MM	EXTERIOR DIMENSIONS IN/MM	QTY
5584	Extra large plaque	10.5" x 14.875" / 266.7 x 377.8 mm	11.625" x 16" / 295.28 x 406.4 mm	7
5581	Extra large clock plaque	10.5" x 14.875" / 266.7 x 377.8 mm	11.625" x 16" / 295.28 x 406.4 mm	6



Material: HB Finish: Gloss White Thickness: 0.25" / 6.35 mm

STREAMLINE AWARDS

ITEM #	DESCRIPTION	DIMENSIONS IN/MM	QTY
5881	Round	5.75" / 146 mm	20
5827	Cross	5.25" x 6.875" / 133.3 x 174.6 mm	20



STREAMLINE AWARD DISPLAY STAND

ITEM #	DESCRIPTION	DIMENSIONS IN/MM	QTY
5804	Mahogany round wood stand	2" / 50.8 mm	20





BAG TAGS

Bag tags are available in an array of materials. These are great for adding personalized identification to luggage, backpacks, laptop bags and more! All our bag tags work with standard bag tag loops or straps and are 2-sided unless otherwise labeled. Clear plastic Bag tag loops available in 6" or 9" (sold separately).

Material: MDF with Maple Veneer **Finish:** Matte Clear **Thickness:** 0.156" / 3.9 mm

NATURAL WOOD BAG TAG, 1-SIDED



ITEM #	DESCRIPTION	DIMENSIONS IN/MM	QTY
4735	Rectangle bag tag	4" x 2.75" / 101.6 x 69.8 mm	25

Material: AL **Finish:** Semi-Gloss White **Thickness:** 0.045" / 1.14 mm

METAL BAG TAGS



4729

ITEM #	DESCRIPTION	DIMENSIONS IN/MM	QTY
4729	Flip flop shaped	2.5" x 4.25" / 63.5 x 107.9 mm	50
4621	Rectangle	2.5" x 4.25" / 63.5 x 107.9 mm	50
4622	Square	3" x 3" / 76.2 x 76.2 mm	50
4625	Round	3.5" / 88.9 mm	50
4671	Car shaped	2.32" x 4" / 58.9 x 101.6 mm	50
4623	Rectangle	2.75" x 4" / 69.8 x 101.6 mm	50
4624	Rectangle	1.75" x 3.5" / 44.4 x 88.9 mm	50



4671



4623

Material: FRP Finish: Gloss White Thickness: 0.09" / 2.29 mm

FRP BAG TAGS

ITEM #	DESCRIPTION	DIMENSIONS IN/MM	QTY
5556	Rectangle	1.75" x 3.5" / 44.4 x 88.9 mm	50
5655	Rectangle <i>(can be used with #5658 overlay)</i>	2.5" x 4.25" / 63.5 x 107.9 mm	50
5503	Rectangle	2.75" x 4" / 69.8 x 101.6 mm	50
5505	Rectangle	3" x 5.5" / 76.2 x 139.7 mm	50
5649	Square	3.5" x 3.5" / 88.9 x 88.9 mm	50
5507	Round	4" / 101.6 mm	50
5897	Megaphone	2.75" x 4" / 69.8 x 101.6 mm	50



BAG TAG ACCESSORIES

ITEM #	DESCRIPTION	DIMENSIONS IN/MM	QTY
5658	Business card clear overlay <i>(for #5655)</i>	2.5" x 4.25" / 63.5 x 107.9 mm	50
4157	Clear plastic bag tag loop	9" / 228.6 mm	50
4736	Clear plastic bag tag loop	6" / 152.4 mm	50





BASKETBALL MINI GOAL

The basketball goal comes with white netting, plastic rim and clear hang tabs.

Material: HB Finish: Gloss White Thickness: 0.125" / 3.18 mm

ITEM #	DIMENSIONS IN/MM	QTY
5548	7.5" x 9" / 190.5 x 228.6 mm	15



BOOKMARKS

Each bookmark features a slot at the top to hold a book's page. Bookmarks can be used as a unique save-the-date, promotional tool or event favor.

Material: AL Finish: Gloss White Thickness: 0.03" / 0.76 mm

ITEM #	DIMENSIONS IN/MM	QTY
5646	1.25" x 5" / 31.7 x 127 mm	25
5767	2" x 3" / 50.8 x 76.2 mm	25



BUSINESS CARD HOLDER WITH INSERT

Personalize this business card holder with digital artwork onto the aluminum plate that fits into place with two-sided tape (supplied) after sublimation.

Material: AL Finish: Gloss White Thickness: 0.03" / 0.76 mm

ITEM #	DESCRIPTION	DIMENSIONS IN/MM	QTY
5751	Mahogany holder with aluminum insert (#5733)	3" x 4" / 76.2 x 101.6 mm	10
5733	Aluminum rectangle insert only	2" x 3.5" / 50.8 x 88.9 mm	50

CLIPBOARDS

These customizable two-sided clipboards include a flat or standard clip that is attached after sublimation using rivets. 25 rivets are included with each case.

Material: HB Finish: Gloss White Thickness: 0.125" / 3.18 mm

ITEM #	DESCRIPTION	DIMENSIONS IN/MM	QTY
5994	Mini clipboard with flat clip	6" x 9" / 152.4 x 228.6 mm	12
1013	Clipboard with flat clip	9" x 12.5" / 228.6 x 317.5 mm	12
1014	Clipboard with standard clip	9" x 12.5" / 228.6 x 317.5 mm	12
5634	Longer clipboard with flat clip	9" x 15.5" / 228.6 x 393.7 mm	12
4672	Benelux clipboard with flat clip	9.76" x 12.68" / 247.9 x 322 mm	12
4673	Monaco clipboard with flat clip	9.76" x 12.68" / 247.9 x 322 mm	12



4673



4672



CLOCKS

Each wall clock kit includes a sublimatable face, hands, motor and a hanging hook. For face only clocks, we offer separate clockworks. For desk top clocks, please see information listed with each clock for more details.

Material: AL **Finish:** Gloss White **Thickness:** 0.045" / 1.14 mm

METAL WALL CLOCK KITS

ITEM #	DESCRIPTION	DIMENSIONS IN/MM	QTY
5627	Round clock kit	8.125" / 206.4 mm	14
5650	Round clock kit with black frame and lens	8.125" / 206.4 mm	8

Material: AL **Finish:** Gloss Clear **Thickness:** 0.045" / 1.14 mm

METAL WALL CLOCK KIT, GLOSS CLEAR

ITEM #	DESCRIPTION	DIMENSIONS IN/MM	QTY
5947	Silver round clock kit	8.125" / 206.4 mm	14

Material: HB **Finish:** Gloss White **Thickness:** 0.125" / 3.18 mm

HARDBOARD WALL CLOCK KIT

ITEM #	DESCRIPTION	DIMENSIONS IN/MM	QTY
1028	Round clock kit with black frame	8.125" / 206.4 mm	10

Material: HB **Finish:** Gloss White **Thickness:** 0.125" / 3.17 mm

HARDBOARD WALL CLOCK FACE

ITEM #	DESCRIPTION	DIMENSIONS IN/MM	QTY
1015	Large round clock face only	8.125" / 206.4 mm	20

Material: HB **Finish:** Gloss White **Thickness:** 0.25" / 6.35 mm

LARGE HARDBOARD WALL CLOCK KIT

ITEM #	DESCRIPTION	DIMENSIONS IN/MM	QTY
5823	Large round clock kit	11.4" / 290 MM	10



Material: MDF Finish: Gloss White Thickness: 0.75" / 19.05 mm

OFFSET CLOCK

ITEM #	DESCRIPTION	DIMENSIONS IN/MM	QTY
5758	Offset clock	5.5" x 8" / 139.7 x 203.2 mm	8

This offset clock features keyholes and a removable easel kickstand for wall or table top display. Kit includes a sublimatable face, hands and motor.



Material: HB Finish: Gloss White Thickness: 0.25" / 6.35 mm

MAHOGANY VERTICAL MANTLE CLOCK KIT

ITEM #	DESCRIPTION	DIMENSIONS IN/MM	QTY
5756	Mantle clock kit with inserts (#5683, #5684)	6.75" x 15.5" / 171.5 x 393.7 mm	2

This mahogany stained kit includes a hardwood clock body, two Unisub tiles, clock motor and hands.



Material: FRP Finish: Gloss White Thickness: 0.09" / 2.29 mm

ROUND DESKTOP CLOCK KIT

ITEM #	DESCRIPTION	DIMENSIONS IN/MM	QTY
5549	Round desktop clock kit with black L-bracket	4.75" / 120.7 mm	10

Kit includes a sublimatable face, hands, motor and black L-bracket stand.



Material: HB Finish: Gloss White Thickness: 0.125" / 3.18 mm

SQUARE DESKTOP CLOCK KIT

ITEM #	DESCRIPTION	DIMENSIONS IN/MM	QTY
1027	Square desktop clock kit	4" x 4" / 101.6 x 101.6 mm	10

Kit includes a sublimatable face, hands, motor and a clear stand.





COASTERS

These coasters are a great way to add personalized home decor. Available in various shapes and different finishes as well as with or without a cork backing.

Material: HB Finish: Gloss White Thickness: 0.125" / 3.18 mm

COASTERS WITH CORK BACK



ITEM #	DESCRIPTION	DIMENSIONS IN/MM	QTY
5677	Square	3.75" x 3.75" / 95.2 x 95.2 mm	40
5822	Round	3.75" / 95.2 mm	40
4015	Heart shaped	3.85" x 4" / 97.8 x 101.6 mm	40

Material: HB Finish: Gloss White Thickness: 0.125" / 3.18 mm

COASTERS WITH RAW BACK, GLOSS WHITE



ITEM #	DESCRIPTION	DIMENSIONS IN/MM	QTY
4430	Pumpkin shaped	3.45" x 3.75" / 87.6 x 95.2 mm	40
1009	Square	4" x 4" / 101.6 x 101.6 mm	40
4026	Square	3.54" x 3.54" / 90 x 90 mm	40
4028	Round	3.54" / 90 mm	40

Material: HB Finish: Semi-Gloss White Thickness: 0.125" / 3.18 mm

COASTER WITH RAW BACK, SEMI-GLOSS WHITE



ITEM #	DESCRIPTION	DIMENSIONS IN/MM	QTY
4597	Square	3.54" x 3.54" / 90 x 90 mm	40

Material: HB Finish: Gloss White Thickness: 0.125" / 3.18 mm

COASTER PUZZLE WITH CORK BACK

ITEM #	DESCRIPTION	DIMENSIONS IN/MM	QTY
5795	Square coaster puzzle (4 pieces)	7.625" x 7.625" / 193.7 x 193.7 mm	10



Material: HB Finish: Gloss White Thickness: 0.125" / 3.18 mm

COASTER HOLDER, SQUARE SLOTTED MAHOAGANY

ITEM #	DIMENSIONS IN/MM	QTY
5701	2.5" x 3" / 63.5 x 76.2 mm	10



COAT HANGERS

These coat hangers offer three double hooks, a sublimatable surface area of 8" x 16" with a flat profile edge, and vertical keyholes on the reverse side to help firmly secure the coat hanger to the wall. For hanging instructions, please see our tip sheet online at www.unisub.com

Material: MDF Finish: Gloss White Thickness: 0.625" / 15.8 mm

ITEM #	DESCRIPTION	DIMENSIONS IN/MM	QTY
4575	Natural edge coat hanger with 3 silver hooks	16" x 8" / 406.4 x 203.2 mm	9
4576	Black edge coat hanger with 3 silver hooks	16" x 8" / 406.4 x 203.2 mm	9



4576



4575



Black backing with two key holes.



DOOR HANGER

Two-sided door hangers are perfect for displaying messages on both sides.

Material: FRP Finish: Gloss White Thickness: 0.09" / 2.29 mm

ITEM #	DESCRIPTION	DIMENSIONS IN/MM	QTY
5545	Door hanger two-sided	4" x 9" / 101.6 x 228.6 mm	25

JEWELRY

From identification tags to charms, pendants and more, Unisub customizable jewelry is perfect for colorfully displaying any monogram, insignia, logo, photo or design.

Material: AL Finish: Gloss White Thickness: 0.045" / 1.14 mm

ID TAGS, GLOSS WHITE

ITEM #	DESCRIPTION	DIMENSIONS IN/MM	QTY
5588	ID tag, 1-sided	1.15" x 2" / 29.2 x 50.8 mm	50
5916	ID tag, 2-sided	1.15" x 2" / 29.2 x 50.8 mm	50



Material: AL Finish: Gloss Clear Thickness: 0.045" / 1.14 mm

ID TAG, GLOSS CLEAR

ITEM #	DESCRIPTION	DIMENSIONS IN/MM	QTY
4004	ID tag, 1-sided	1.15" x 2" / 29.2 x 50.8 mm	50

ALUMINUM BEAD CHAIN WITH JUMP RING FOR ID TAGS



ITEM #	DIMENSIONS IN/MM	QTY
5605	30" / 762 mm	50

Material: AL Finish: Semi-Gloss White Thickness: 0.030" / 0.76 mm

BEZEL PENDANTS, INSERTS AND NECKLACE

ITEM #	DESCRIPTION	DIMENSIONS IN/MM	QTY
4682	Rectangle bezel with insert	1.10" x 2.09" / 27.94 x 53.08 mm	25
4687	Rectangle insert only	1" x 2" / 25.4 x 50.8 mm	25
4684	Large square bezel with insert	1.12" x 1.12" / 28.4 x 28.4 mm	25
4689	Large square insert only	1" x 1" / 25.4 x 25.4 mm	25
4683	Small square bezel with insert	0.86" x 0.86" / 21.8 x 21.8 mm	25
4688	Small square insert only	0.75" x 0.75" / 19.05 x 19.05 mm	25
4686	Large round bezel with insert	1.11" / 28.19 mm	25
4691	Large round insert only	1" / 25.4 mm	25
4685	Small round bezel with insert	0.86" / 21.8 mm	25
4690	Small round insert only	0.75" / 19.05 mm	25
5597	Necklace chain with one bale	18" / 457.2 mm	20

These silver plated bezels are .05" / 1.27mm thickness, nickel free and come with aluminum inserts that are adhered with double-sided tape (included). Use as pendants (with a necklace chain), key chains (with ring only) or ornaments (ribbon not included).



4682



4686



4684

Material: FRP Finish: Gloss White Thickness: 0.09" / 2.29 mm

BUTTON

ITEM #	DESCRIPTION	DIMENSIONS IN/MM	QTY
5665	Round button, 1-sided with self-adhesive pin	2.5" / 63.5 mm	50



Material: AL Finish: Gloss White Thickness: 0.03" / 0.76 mm

LAPEL PIN

ITEM #	DESCRIPTION	DIMENSIONS IN/MM	QTY
5666	Round lapel pin with clasp	0.875" / 22.2 mm	25

This lapel pin comes complete with nickel plated clasp and pin attachment.



Material: AL Finish: Varies (see below) Thickness: 0.030" / 1.14 mm

CUFF BRACELETS



4643



4646



4642



4634



4636

ITEM #	DESCRIPTION	DIMENSIONS IN/MM	QTY
4645	Chevron, semi-gloss white finish	0.74" x 6.5" / 18.8 x 165.5 mm	50
4646	Chevron, silver finish	0.74" x 6.5" / 18.8 x 165.5 mm	50
4648	Crete, semi-gloss white finish	1.55" x 6.5" / 39.3 x 165.5 mm	50
4649	Crete, silver finish	1.55" x 6.5" / 39.3 x 165.5 mm	50
4642	Geneva, semi-gloss white finish	2" x 6.5" / 50.8 x 165.5 mm	50
4643	Geneva, silver finish	2" x 6.5" / 50.8 x 165.5 mm	50
4630	Standard, semi-gloss white finish	0.55" x 6.5" / 13.9 x 165.5 mm	50
4631	Standard, silver finish	0.55" x 6.5" / 13.9 x 165.5 mm	50
4633	Standard, semi-gloss white finish	0.875" x 6.5" / 22.2 x 165.5 mm	50
4634	Standard, silver finish	0.875" x 6.5" / 22.2 x 165.5 mm	50
4636	Standard, semi-gloss white finish	1.375" x 6.5" / 34.9 x 165.5 mm	50
4637	Standard, silver finish	1.375" x 6.5" / 34.9 x 165.5 mm	50
4639	Standard, semi-gloss white finish	1.75" x 6.5" / 44.4 x 165.5 mm	50
4640	Standard, silver finish	1.75" x 6.5" / 44.4 x 165.5 mm	50

EZ BENDER TOOL



ITEM #	DESCRIPTION	DIMENSIONS IN/MM	QTY
4656	EZ Bender Tool	1" x 7" / 25.4 x 177.8 mm	3

Use the EZ Bender tool after sublimation to curve the sublimated bracelet for wearing. See tip sheet and directions at unsub.com/support

Material: AL Finish: Gloss White Thickness: 0.03" / 0.76 mm

SCALLOP EDGE CHARMS/PENDANTS

ITEM #	DESCRIPTION	DIMENSIONS IN/MM	QTY
5591	Oval charm, small	0.638" x 0.875" / 16.2 x 22.2 mm	20
5592	Circle charm, small	0.875" / 22.2 mm	20
5593	Oval charm, large	0.836" x 1.074" / 21.23 x 27.27 mm	20
5594	Circle charm, large	1.25" / 31.8 mm	20
5595	Heart charm, small	0.875" x 1" / 22.22 x 25.4 mm	20
5596	Heart charm, large	1.091" x 1.187" / 27.71 x 30.14 mm	20

These one-sided charms and pendants have a silver scalloped edge and a pre-drilled hole at the top to attach with a bale to any Unisub charm bracelet, necklace or earring attachment.



5593



5592

Material: AL Finish: Gloss White Thickness: 0.03" / 0.76 mm

CIRCLE CHARMS AND BRACELETS

ITEM #	DESCRIPTION	DIMENSIONS IN/MM	QTY
5900	Charm bracelet with five bales and circle charms	7.25" / 184.1 mm	10
5901	Circle charm, 1-sided	0.75" / 19.1 mm	50

Charm bracelet is made of a combination of aluminum and nickel metals.



Material: Silver plated

ACCESSORY PIECES

ITEM #	DESCRIPTION	DIMENSIONS IN/MM	QTY
5598	Bracelet with five bales	8" / 203.2 mm	10
5597	Necklace with one bale	18" / 457.2 mm	20

Necklace is made of imitation rhodium. Charm bracelet is made of a combination of aluminum and nickel metals.



KEEPSAKE BOXES

Available in two finishes, our keepsake boxes are perfect for storing personal mementos, jewelry and other tokens of remembrance.



Material: AL Finish: Gloss White Thickness: 0.045" / 1.14 mm

TWO-SIDED KEEPSAKE BOX WITH INSERT

ITEM #	DESCRIPTION	DIMENSIONS IN/MM	QTY
5690	Mahogany box with insert (#5711)	6" x 8" / 152.4 x 203.2 mm	6
5711	Aluminum rectangle 2-sided insert only (#5690)	5" x 7" / 127 x 177.8 mm	10



Material: HB Finish: Gloss White Thickness: 0.25" / 6.35 mm

KEEPSAKE BOXES WITH INSERT

ITEM #	DESCRIPTION	DIMENSIONS IN/MM	QTY
5989	Espresso black box with insert (#5702)	6" x 8" / 152.4 x 203.2 mm	6
5990	Mahogany box with insert (#5702)	6" x 8" / 152.4 x 203.2 mm	6
5702	Hardboard rectangle insert only	4" x 6" / 101.6 x 152.4 mm	28



Material: AL Finish: Gloss White Thickness: 0.03" / 0.762 mm

KEEPSAKE ROUND CASE WITH INSERT

ITEM #	DESCRIPTION	DIMENSIONS IN/MM	QTY
5807	Mahogany round case with insert (#5809)	5.625" / 142.8 mm	6
5809	Aluminum round insert only	4.5" / 114.3 mm	12



KEY CHAINS

Personalize any key chain with a photo or design. All key chains include rings and tabs.



Material: AL Finish: Semi-Gloss White Thickness: 0.030" / 0.76 mm

METAL KEY CHAIN, 1-SIDED

ITEM #	DESCRIPTION	DIMENSIONS IN/MM	QTY
4600	Square 1-sided key chain with ring and tab	7.5" x 7.5" / 190.6 x 190.6 mm	50



4731

Material: AL Finish: Semi-Gloss White Thickness: 0.045" / 1.14 mm

METAL KEY CHAINS, SEMI-GLOSS WHITE

ITEM #	DESCRIPTION	DIMENSIONS IN/MM	QTY
4728	Flip flop shape	1.5" x 2.75" / 38.1 x 69.9 mm	50
4731	Anchor shape	2.4" x 3.15" / 60.9 x 80 mm	50
4670	Wine glass shape	1.6" x 2.7" / 40.6 x 68.6 mm	50
4664	Two part heart shape	2.73" x 3.18" / 69.3 x 80.7 mm	50
4662	Car shape	1.6" x 2.75" / 40.6 x 69.9 mm	50
4660	Awareness ribbon shape	1.6" x 2.75" / 40.6 x 69.9 mm	50
4668	Shamrock shape	2.25" x 2.26" / 57.1 x 57.4 mm	50
4666	Martini glass shape	2.54" x 2.75" / 64.5 x 69.9 mm	50



4670



4660



4666

Material: AL Finish: Gloss White Thickness: 0.045" / 1.14 mm

METAL KEY CHAINS, GLOSS WHITE

ITEM #	DESCRIPTION	DIMENSIONS IN/MM	QTY
5917	Oval	1.375" x 2.5" / 34.9 x 63.5 mm	50
4106	Rectangle	1.25" x 3" / 31.8 x 76.2 mm	50
4107	Square	2.25" x 2.25" / 57.2 x 57.2 mm	50
4411	Round	2" / 50.8 mm	50
4408	T-shirt shape	2.77" x 2.5" / 70.4 x 63.5"	50
4435	Stein shape	2.06" x 2.74" / 52.3 x 69.6 mm	50
5995	Rectangle	1.6" x 2.25" / 40.6 x 57.1 mm	50



4435



5917



4408



5995

Material: FRP Finish: Gloss White Thickness: 0.09" / 2.29 mm

FRP KEY CHAINS

ITEM #	DESCRIPTION	DIMENSIONS IN/MM	QTY
5520	Heart shape	2.25" x 2.5" / 57.2 x 63.5 mm	50
5521	Round	2.5" / 63.5 mm	50
5524	Square	2.25" x 2.25" / 57.2 x 57.2 mm	50
5525	Rectangle	1.25" x 3" / 31.7 x 76.2 mm	50



KEY HANGER

This key hanger has a chamfer edge and includes 4 silver hooks to be attached after sublimation. Key holes on the back allow for wall display.

Material: MDF Finish: Gloss White Thickness: 0.625" / 15.8 mm

ITEM #	DESCRIPTION	DIMENSIONS IN/MM	QTY
4392	Key hanger with 4 silver hooks	5" x 11" / 127 x 279.4 mm	10





LICENSE PLATES, FRAMES AND STRIPS

Your customers can ride in style with our tailor-made plates and frames. These metal plates and frames are a fantastic way to promote a company, show team spirit, or surprise a new driver.

Material: AL Finish: Gloss White Thickness: 0.03" / 0.76 mm

LICENSE PLATE, GLOSS WHITE



ITEM #	DESCRIPTION	DIMENSIONS IN/MM	QTY
5656	License plate	5.88" x 11.88" / 149.2 x 301.6 mm	50

Material: AL Finish: Gloss White Thickness: 0.03" / 0.76 mm

LICENSE PLATE MINI



ITEM #	DESCRIPTION	DIMENSIONS IN/MM	QTY
4565	Mini license plate	2.94" x 5.88" / 74.7 x 149.3 mm	50

Material: AL Finish: Gloss Clear Thickness: 0.045" / 1.14 mm

LICENSE PLATE, GLOSS CLEAR



ITEM #	DESCRIPTION	DIMENSIONS IN/MM	QTY
5948	License plate, silver finish	5.88" x 11.88" / 149.2 x 301.6 mm	50

Material: AL Finish: Gloss White Thickness: 0.03" / 0.764 mm

LICENSE PLATE FRAMES

ITEM #	DESCRIPTION	DIMENSIONS IN/MM	QTY
4566	License plate frame with original 4 notches	6.5" x 12.25" / 165.1 x 311.1 mm	50
4567	License plate frame with standard 2 notches	6.46" x 12.21" / 164 x 310.1 mm	50
4568	License plate frame with slim line 4 notches	6.46" x 12.21" / 164 x 310.1 mm	50



4566

DISCLAIMER: Our license plate related products are made to accommodate most state issued license plates, however, the exact fit or use of the frames and/or strips cannot be guaranteed. It is the responsibility of the consumer to verify the use and compliance of plates and frames with local authorities.



4567



4568

Material: AL Finish: Gloss White Thickness: 0.03" / 0.76 mm

LICENSE PLATE FRAME STRIPS

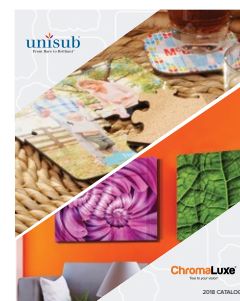
ITEM #	DESCRIPTION	DIMENSIONS IN/MM	QTY
5678	License plate frame strips (as a pair)	0.92" x 10.22" + 0.725" x 6.25" / 23.4 x 259.6 + 18.4 x 158.8 mm	50

License plate frame strips are sold as a pair to fit into standard license plate frames.



Get inspired at Unisub.com where you'll find

- Product templates
- Sublimation Tips, Tricks & Videos
- Product Photos
- Free Graphics & Patterns
- Digital Catalog
- Market ideas



unisub 17777 Route 100, Suite 100 www.unisub.com	Product: Creative Border HD Metal Ornaments Item #: 4503 Template Color: 0100000	Dimension (in): 3.56 x 2.86 Dimension (mm): 90.38 x 72.73 DPI: 300 Color Mode: RGB
---	--	---

No Taper/Print Area	Safety (Print) Area
Print Area	Blank
Important: Create template before printing on hot metal ornaments.	

Sign up for our e-newsletter at <http://www.unisub.com/enews> for the latest product updates, ideas and more!

unisub
From Bare to Brilliant™



MAGNETS

Pair with a magnetic dry erase board or decorate a refrigerator door. These metal shapes include a self adhesive magnet to attach after sublimating.

Material: AL Finish: Semi-Gloss White Thickness: 0.03" / 0.76 mm

METAL MAGNETS, SEMI-GLOSS WHITE

ITEM #	DESCRIPTION	DIMENSIONS IN/MM	QTY
4665	Martini shape	2.54" x 2.75" / 64.52 x 69.85 mm	50
4663	Two part heart shape	2.73" x 3.18" / 69.34 x 80.78 mm	50
4667	Shamrock shape	2.25" x 2.26" / 57.15 x 57.4 mm	50
4669	Wine glass shape	1.6" x 2.7" / 40.64 x 68.58 mm	50
4661	Car shape	1.6" x 2.75" / 40.64 x 69.85 mm	50
4659	Awareness ribbon shape	1.6" x 2.75" / 40.64 x 69.85 mm	50
4535	Stein shape	2.06" x 2.74" / 52.32 x 69.6 mm	50



4535



4661



4663



Material: AL Finish: Gloss White Thickness: 0.03" / 0.76 mm

METAL MAGNETS, GLOSS WHITE

ITEM #	DESCRIPTION	DIMENSIONS IN/MM	QTY
5734	Rectangle	2" x 3" / 50.8 x 76.2 mm	50
4409	T-shirt shape	2.5" x 2.77" / 63.5 x 70.4 mm	50

Material: FRP Finish: Gloss White Thickness: 0.09" / 2.29 mm

MAGNETS, FRP

ITEM #	DESCRIPTION	DIMENSIONS IN/MM	QTY
5522	Round	2.5" / 63.5 mm	50
5523	Square with radius corners	2.25" x 2.25" / 57.1 x 57.1 mm	50
5527	Heart shape	2.25" x 2.5" / 57.1 x 63.5 mm	50

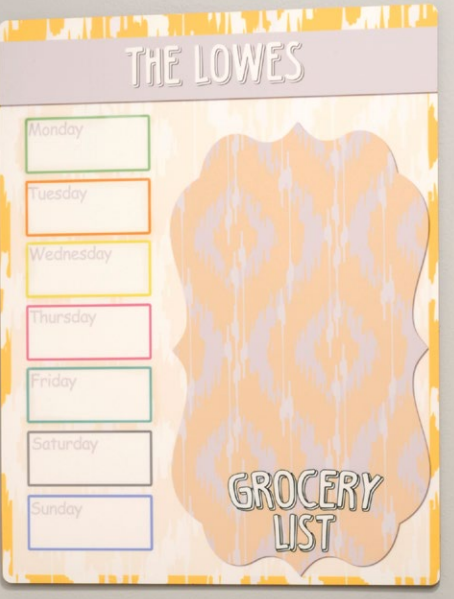


Material: HB Finish: Gloss White Thickness: 0.125" / 3.18 mm

MAGNETS, HARDBOARD

ITEM #	DESCRIPTION	DIMENSIONS IN/MM	QTY
4051	Square	2.25" x 2.25" / 57.1 x 57.1 mm	50
4052	Rectangle	2" x 3" / 50.8 x 76.2 mm	50





MESSAGE/DRY ERASE BOARDS/SIGNS

Customers will love these personalized one-sided dry erase boards that can be also used for signs. Available in two substrates, hardboard or magnetic steel. Both steel and hardboard items have radius corners unless otherwise noted. Hang tabs are included for sizes up to 11" x 14" large.

Material: STEEL **Finish:** Gloss White **Thickness:** 0.023" / 0.58 mm

MESSAGE BOARDS/SIGNS, STEEL

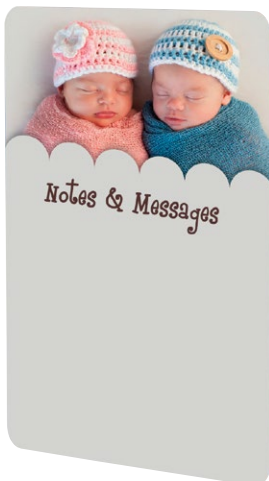
ITEM #	DESCRIPTION	DIMENSIONS IN/MM	QTY
5954	Steel panel	7" x 9" / 177.8 x 228.6 mm	10
5957	Steel panel	8" x 10" / 203.2 x 254 mm	10
5958	Steel panel	9" x 12" / 228.6 x 304.8 mm	10
5955	Steel panel	11" x 14" / 279.4 x 355.6 mm	10
5960	Steel panel with straight corners	11.875" x 23.875" / 301.6 x 606.4 mm	10
5961	Steel panel with straight corners	23.875" x 47.875" / 606.4 x 1216.02 mm	30



Material: HB **Finish:** Gloss White **Thickness:** 0.125" / 3.18 mm

MESSAGE BOARDS/SIGNS/PLACEMATS, HARDBOARD

ITEM #	DESCRIPTION	DIMENSIONS IN/MM	QTY
1010	Hardboard panel	7.5" x 9" / 190.5 x 228.6 mm	20
1011	Hardboard panel	8" x 10.3" / 203.2 x 261.6 mm	20
1012	Hardboard panel	9" x 12.5" / 228.6 x 317.5 mm	20



1011



1012

NAME BADGES

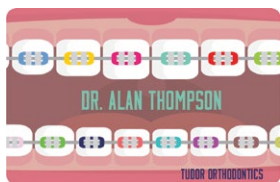
Check out our wide variety of name badges in various sizes, shapes and finishes, to create a professional look for any business. Unless noted, all badges have a radius corner edge. Magnetic backings and pins are sold separately, please contact your distributor for purchasing information. Don't have a distributor? Find one at www.unisub.com today!



Material: AL Finish: matte White Thickness: 0.03" / 0.76 mm

METAL NAME BADGES, MATTE

ITEM #	DESCRIPTION	DIMENSIONS IN/MM	QTY
4466	Rectangle	1.5" x 3" / 38.1 x 76.2 mm	100
4470	Rectangle	2" x 3" / 50.8 x 76.2 mm	100



4470



4466

Material: AL Finish: Gloss White Thickness: 0.03" / 0.76 mm

METAL NAME BADGES, GLOSS WHITE

ITEM #	DESCRIPTION	DIMENSIONS IN/MM	QTY
4460	Rectangle	1.25" x 3" / 31.8 x 76.2 mm	100
4461	Rectangle	1.5" x 3" / 38.1 x 76.2 mm	100
4467	Rectangle	2" x 3" / 50.8 x 76.2 mm	100
5748	Rectangle with square corners	2" x 3.5" / 50.8 x 88.9 mm	50
5733	Rectangle	2" x 3.5" / 50.8 x 88.9 mm	50
4462	Rectangle	2.125" x 3.375" / 53.9 x 85.7 mm	100
5731	Rectangle	2.5" x 3.5" / 63.5 x 88.9 mm	50
4463	Oval	1.5" x 3" / 38.1 x 76.2 mm	100



4460



4467



4463



4462

Material: AL Finish: Gloss Clear Thickness: 0.045" / 1.14 mm

METAL NAME BADGE, GLOSS SILVER

ITEM #	DESCRIPTION	DIMENSIONS IN/MM	QTY
5950	Silver rectangle	2" x 3" / 50.8 x 76.2 mm	150



5950

Material: FRP Finish: Matte White Thickness: 0.09" / 2.29 mm

NAME BADGES, MATTE WHITE

ITEM #	DESCRIPTION	DIMENSIONS IN/MM	QTY
5515	Rectangle	1" x 3" / 25.4 x 76.2 mm	250
5516	Rectangle	1.25" x 3" / 31.8 x 76.2 mm	200
4001	Rectangle	1.5" x 3" / 38.1 x 76.2 mm	150
5531	Rectangle	2" x 3" / 50.8 x 76.2 mm	150



5516



4001

Material: FRP Finish: Gloss White Thickness: 0.09" / 2.29 mm

NAME BADGES, GLOSS WHITE

ITEM #	DESCRIPTION	DIMENSIONS IN/MM	QTY
5501	Rectangle	1" x 3" / 25.4 x 76.2 mm	250
5502	Rectangle	1.25" x 3" / 31.8 x 76.2 mm	200
5786	Rectangle	1.5" x 3" / 38.1 x 76.2 mm	150
5532	Oval	1.5" x 3" / 38.1 x 76.2 mm	150
5530	Rectangle	2" x 3" / 50.8 x 76.2 mm	150



5501



5532

NAME PLATES/INSERTS

Use a name plate set or sublimated insert piece to decorate any office.



Material: AL **Finish:** Gloss White **Thickness:** 0.03" / 0.76 mm

EXECUTIVE NAME PLATE SET

ITEM #	DESCRIPTION	INT. DIMENSIONS IN/MM	EXT. DIMENSIONS IN/MM	QTY
5752	Mahogany name plate with aluminum insert	1.69" x 9.375" / 42.7 x 238.1 mm	2.25" x 9.375" / 57.2 x 238.1 mm	10

Hardwood base features slots for business cards and pens in our mahogany name plate with aluminum insert.

Material: FRP **Finish:** Gloss White **Thickness:** 0.09" / 2.29 mm

NAME PLATE INSERT, FRP

ITEM #	DESCRIPTION	DIMENSIONS IN/MM	QTY
5580	Rectangle name plate insert only	2" x 10" / 50.8 x 254 mm	25

The FR plastic name plate fits into common-size name plate holders.



ORNAMENTS

Our long lasting ornaments make a treasured keepsake. Available in one-sided or two-sided and in different substrates. All ornaments include a red or white satin ribbon for hanging.

Material: MDF with maple Veneer **Finish:** Matte Clear **Thickness:** 0.156" / 3.9 mm

NATURAL WOOD KEEPSAKE ORNAMENTS, 1-SIDED



4733

ITEM #	DESCRIPTION	DIMENSIONS IN/MM	QTY
4734	Benelux shape	2.76" x 3.95" / 70.1 x 100.3 mm	25
4733	Round	2.75" / 69.9 mm	25

Natural wood ornaments have a smooth, matte finish that allows the wood grain to show through. Coated on both sides for quality purposes, 1 side is optimized for sublimation (choose which side to sublimate). Red satin ribbon is included.



4734

Material: AL **Finish:** Semi-Gloss White **Thickness:** 0.030" / 0.76 mm

METAL KEEPSAKE ORNAMENTS, 1-SIDED

ITEM #	DESCRIPTION	DIMENSIONS IN/MM	QTY
4598	Benelux shape	2.76" x 3.95" / 70.1 x 100.3 mm	50
4599	Round	2.75" / 69.9 mm	50



4598



4599

Material: AL Finish: Gloss White Thickness: 0.045" / 1.14 mm

CREATIVE BORDER METAL ORNAMENTS

ITEM #	DESCRIPTION	DIMENSIONS IN/MM	QTY
4102	London creative border	3" x 3" / 76 x 76 mm	50
4103	Benelux creative border	2.76" x 3.95" / 70.1 x 100.3 mm	50
4193	Prague creative border	2.95" x 2.95" / 74.9 x 74.9 mm	50
4194	Berlin creative border	2.74" x 3.95" / 69.5 x 100.3 mm	50



4193



4194



4102



4103

Material: AL Finish: Gloss White Thickness: 0.045" / 1.14 mm

METAL ORNAMENTS

ITEM #	DESCRIPTION	DIMENSIONS IN/MM	QTY
4170	Round	2.75" / 69.9 mm	50
4171	Oval	2.35" x 3" / 59.6 x 76.2 mm	50
4172	Hexagon	2.6" x 3" / 66 x 76.2 mm	50
4173	Rectangle, landscape/horizontal	2" x 3" / 50.8 x 76.2 mm	50
4174	Rectangle, portrait/vertical	2" x 3" / 50.8 x 76.2 mm	50
4175	Tapered shape	2.75" x 4" / 69.9 x 104.1 mm	50
4334	Tree shape	3.38" x 3.95" / 85.9 x 100.3 mm	50
4332	Heart shape	2.87" x 3" / 72.9 x 76.2 mm	50
4333	Bell shape	3.33" x 3.33" / 84.6 x 84.6 mm	50
4331	Star shape	3.81" x 3.98" / 96.8 x 101 mm	50
4335	Ball shape	3" x 3.37" / 76.2 x 85.6 mm	50
4449	Paw print shape	3.59" x 3.71" / 91.2 x 94.2 mm	50



4173



4175



4334



4449



PET TAGS

Our pet tags come complete with nickel plated triangles for attachment and are available in 1 or 2-sided options.

Material: AL Finish: Gloss White Thickness: 0.045" / 1.14 mm

PET TAGS, 1-SIDED

ITEM #	DESCRIPTION	DIMENSIONS IN/MM	QTY
5770	Heart shape with tab	1.25" x 1.38" / 31.8 x 35.1 mm	25
5771	Dog bone shape with tab	1" x 1.5" / 25.4 x 38.1 mm	25
5773	Round with tab	1.25" x 1.5" / 31.8 x 38.1 mm	25



5771



5770

Material: AL Finish: Gloss White Thickness: 0.045" / 1.14 mm

PET TAGS

ITEM #	DESCRIPTION	DIMENSIONS IN/MM	QTY
4737	Heart shape with tab	1.25" x 1.38" / 31.8 x 35.1 mm	25
4738	Dog bone shape with tab	1" x 1.5" / 25.4 x 38.1 mm	25
4739	Round with tab	1.25" x 1.5" / 31.8 x 38.1 mm	25



4737



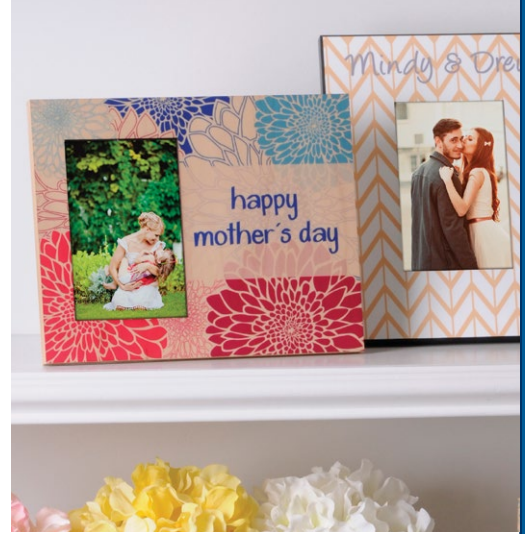
4738



4739

PICTURE FRAMES

These are no ordinary photo frames – these frames make a statement. Offered in natural wood or white coated MDF, these frames are perfect for displaying treasured photos with a variety of unique graphics, patterns and themes.



Material: MDF with Maple Veneer Finish: Matte Clear Thickness: 0.625" / 15.8 mm

PICTURE FRAMES, NATURAL WOOD

ITEM #	DESCRIPTION	DIMENSIONS IN/MM	QTY
4590	Picture frame, holds 4" x 6" photo	8" x 10" / 203.2 x 254 mm	14
4591	Offset picture frame, holds 4" x 6" photo	8" x 10" / 203.2 x 254 mm	14

These picture frames each include an easel and glass.

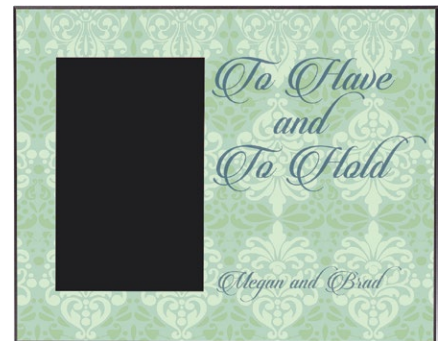


Material: MDF Finish: Gloss White Thickness: 0.625" / 15.8 mm

PICTURE FRAMES, MDF

ITEM #	DESCRIPTION	DIMENSIONS IN/MM	QTY
1019	Picture frame, holds 4" x 6" photo	8" x 10" / 203.2 x 254 mm	14
5607	Offset picture frame, holds 4" x 6" photo	8" x 10" / 203.2 x 254 mm	12
5659	Picture frame, holds 5" x 7" photo	8" x 10" / 203.2 x 254 mm	14

MDF picture frames each include an easel and glass.



Material: HB Finish: Gloss White Thickness: 0.25" / 6.35 mm

PICTURE FRAME, HARDBOARD

ITEM #	DESCRIPTION	DIMENSIONS IN/MM	QTY
5899	Picture frame, holds 4" x 6" photo	7" x 8.5" / 177.8 x 215.9 mm	10

This hardboard picture frame includes an easel and mylar lens.





PUZZLES

These hardboard jigsaw puzzles come ready to sublimate without film. Small parts, not recommended for children ages 3 and under.

Material: HB Finish: Gloss White Thickness: 0.125" / 3.18 mm

PUZZLES

ITEM #	DESCRIPTION	DIMENSIONS IN/MM	QTY
4742	30 pcs, rectangle	6.88" x 9.84" / 175 x 250 mm	10
4743	60 pcs, rectangle	6.88" x 9.84" / 175 x 250 mm	10
4744	25 pcs, square	6.7" x 6.7" / 170 x 170 mm	10
4745	25 pcs, heart	6.7" x 6.7" / 170 x 170 mm	10



SERVING TRAYS

Personalize any serving tray with a logo, family name, monogram or favorite kitchen décor. Available as small or large trays in both natural and black finishes, the hardboard sublimatable bottom is attached to the rails after sublimation.



Material: HB Finish: Gloss White Thickness: 0.125" / 3.18 mm

SERVING TRAYS, NATURAL WOOD

ITEM #	DESCRIPTION	DIMENSIONS IN/MM	QTY
5673	Small serving tray with insert (#5710)	8.875" x 13.875" / 225.4 x 352.4 mm	2
5700	Small serving tray with insert (#5710)	8.875" x 13.875" / 225.4 x 352.4 mm	25
5710	Small serving tray insert only	8.25" x 13.25" / 209.6 x 336.6 mm	8
5672	Large serving tray with insert (#5709)	11.875" x 17.625" / 301.6 x 447.8 mm	2
5699	Large serving tray with insert (#5709)	11.875" x 17.625" / 301.6 x 447.8 mm	25
5709	Large serving tray insert only	11.375" x 17.125" / 288.9 x 434.9 mm	10



Material: HB Finish: Gloss White Thickness: 0.125" / 3.18 mm

SERVING TRAYS, ESPRESSO BLACK

ITEM #	DESCRIPTION	DIMENSIONS IN/MM	QTY
5988	Small serving tray with insert (#5710)	8.875" x 13.875" / 225.4 x 352.4 mm	2
5987	Small serving tray with insert (#5710)	8.875" x 13.875" / 225.4 x 352.4 mm	25
5710	Small serving tray insert only	8.25" x 13.25" / 209.6 x 336.6 mm	8
5986	Large serving tray with insert (#5709)	11.875" x 17.625" / 301.6 x 447.8 mm	2
5985	Large serving tray with insert (#5709)	11.875" x 17.625" / 301.6 x 447.8 mm	25
5709	Large serving tray insert only	11.375" x 17.125" / 288.9 x 434.9 mm	10





SIGNS

Make a clear statement with professional signs, available in a variety of sizes. Dry-erase boards are offered in steel and hardboard and are easy to install and clean. Unless noted, steel and hardboard products listed have radius corners.

Material: STEEL **Finish:** Gloss White **Thickness:** 0.023" / 0.58 mm

SIGNS/MESSAGE BOARDS, STEEL

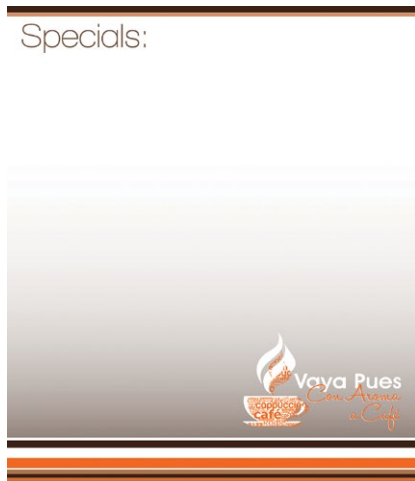
ITEM #	DESCRIPTION	DIMENSIONS IN/MM	QTY
5954	Steel panel	7" x 9" / 177.8 x 228.6 mm	10
5957	Steel panel	8" x 10" / 203.2 x 254 mm	10
5958	Steel panel	9" x 12" / 228.6 x 304.8 mm	10
5955	Steel panel	11" x 14" / 279.4 x 355.6 mm	10
5960	Steel panel with straight corners	11.875" x 23.875" / 301.6 x 606.4 mm	10
5961	Steel panel with straight corners	23.875" x 47.875" / 606.4 x 1216.02 mm	30

Material: HB **Finish:** Gloss White **Thickness:** 0.125" / 3.18 mm

SIGNS/MESSAGE BOARDS, HARDBOARD

ITEM #	DESCRIPTION	DIMENSIONS IN/MM	QTY
1010	Hardboard panel	7.5" x 9" / 190.5 x 228.6 mm	20
1011	Hardboard panel	8" x 10.3" / 203.2 x 261.6 mm	20
1012	Hardboard panel	9" x 12.5" / 228.6 x 317.5 mm	20

Specials:



For outdoor signage & material, see more information in the ChromaLuxe section.

Material: FRP Finish: Gloss White Thickness: 0.09" / 2.29 mm

OVAL DOOR SIGN

ITEM #	DESCRIPTION	DIMENSIONS IN/MM	QTY
5546	Oval door sign	3.5" x 5" / 88.9 x 127 mm	50

Comes with pre-drilled holes for easy installation.



Material: FRP Finish: Gloss White Thickness: 0.03" / 0.762 mm

DASH PLATES

ITEM #	DESCRIPTION	DIMENSIONS IN/MM	QTY
5733	Dash plates with radius corners	3.5" x 2" / 88.9 x 50.8 mm	50
5748	Dash plates with straight corners	3.5" x 2" / 88.9 x 50.8 mm	50

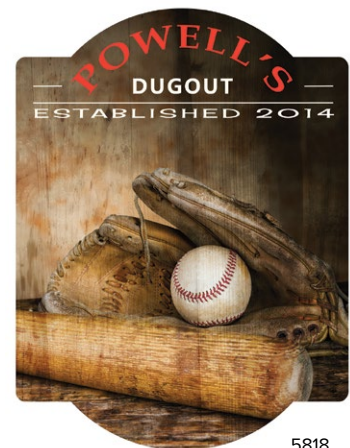


Material: HB Finish: Gloss White Thickness: 0.25" / 6.35 mm

SIGNS OF LIFE

ITEM #	DESCRIPTION	DIMENSIONS IN/MM	QTY
5818	Traditional shape	11.5" x 15.4" / 292.1 x 391.1 mm	8
5819	Antique shape	10.9" x 15.4" / 276.9 x 391.2 mm	8
5820	Display shape	5.7" x 15.5" / 144.8 x 393.7 mm	16

These specially shaped signs come with clear hanging tabs. A great way to add custom decor to any home, man cave, or business.



5818



5819



5820



STICKY NOTE HOLDERS

These holders can be personalized with a logo, monogram or other artwork to hold helpful sticky notes. Choose from two different styles.

Material: HB Finish: Gloss White Thickness: 0.25" / 6.35 mm

BLACK EDGE STICKY NOTE HOLDER



ITEM #	DESCRIPTION	INT. DIMENSIONS IN/MM	EXT. DIMENSIONS IN/MM	QTY
5681	Black holder with hardboard insert	2.125" x 3.125" / 54 x 79.4 mm	3.13" x 5.38" / 79.5 x 136.7 mm	25

This hardboard sticky note holder comes in handy on any desk and can be easily personalized. Sticky notes not included.

Material: AL Finish: Gloss White Thickness: 0.03" / 0.76 mm

MAHOGANY STICKY NOTE HOLDER



ITEM #	DESCRIPTION	DIMENSIONS IN/MM	QTY
5784	Mahogany holder with insert (#5733)	4.25" x 6.25" / 107.9 x 158.8 mm	10
5733	Aluminum rectangle insert only	2" x 3.5" / 50.8 x 88.9 mm	50

Personalize a desk with name or company logo onto the aluminum insert that fits into place with two-sided tape (supplied) after sublimation. Sticky notes not included.

TRAILER HITCH COVERS

Our injection-molded trailer hitch covers take automobile personalization to a new level. They're perfect for sports, school and personalized gift markets.

Material: AL **Finish:** Gloss White **Thickness:** 0.030" / 0.76 mm



TRAILER HITCH KITS AND INSERTS

ITEM #	DESCRIPTION	DIMENSIONS IN/MM	QTY
4045	Hitch cover kit for 2" post with oval insert	Insert: 3.125" x 5.5" / 79.3 x 139.7 mm	12
4049	Aluminum insert only (for #4045 hitch cover)	3.125" x 5.5" / 79.3 x 139.7 mm	50
4573	Hitch cover kit for 2" post with rectangle insert	Insert: 3.4" x 4.7" / 86.36 x 119.38 mm	12
4569	Aluminum insert only (for #4573 hitch cover)	3.4" x 4.7" / 86.36 x 119.38 mm	50



TILES

Hardboard tiles are available in a variety of sizes and can be made into magnets, inserts, signs and more.



5683

Material: HB Finish: Gloss White Thickness: 0.25" / 6.35 mm

TILES

ITEM #	DESCRIPTION	DIMENSIONS IN/MM	QTY
5708	Square	2" x 2" / 50.8 x 50.8 mm	100
5702	Rectangle	4" x 6" / 101.6 x 152.4 mm	28
5682	Square	4.25" x 4.25" / 107.9 x 107.9 mm	26
5726	Oval	4.22" x 5.99" / 107.2 x 151.6 mm	20
5683	Square	6" x 6" / 152.4 x 152.4 mm	26
5684	Rectangle	6" x 7.875" / 152.4 x 200 mm	26
5697	Square	8" x 8" / 203.2 x 203.2 mm	26
5750	Rectangle	8" x 10" / 203.2 x 254 mm	12
5698	Square	12" x 12" / 304.8 x 304.8 mm	26



5726

TROPHY DISK INSERTS

Use these sublimatable standard sized inserts for trophies or other related products.

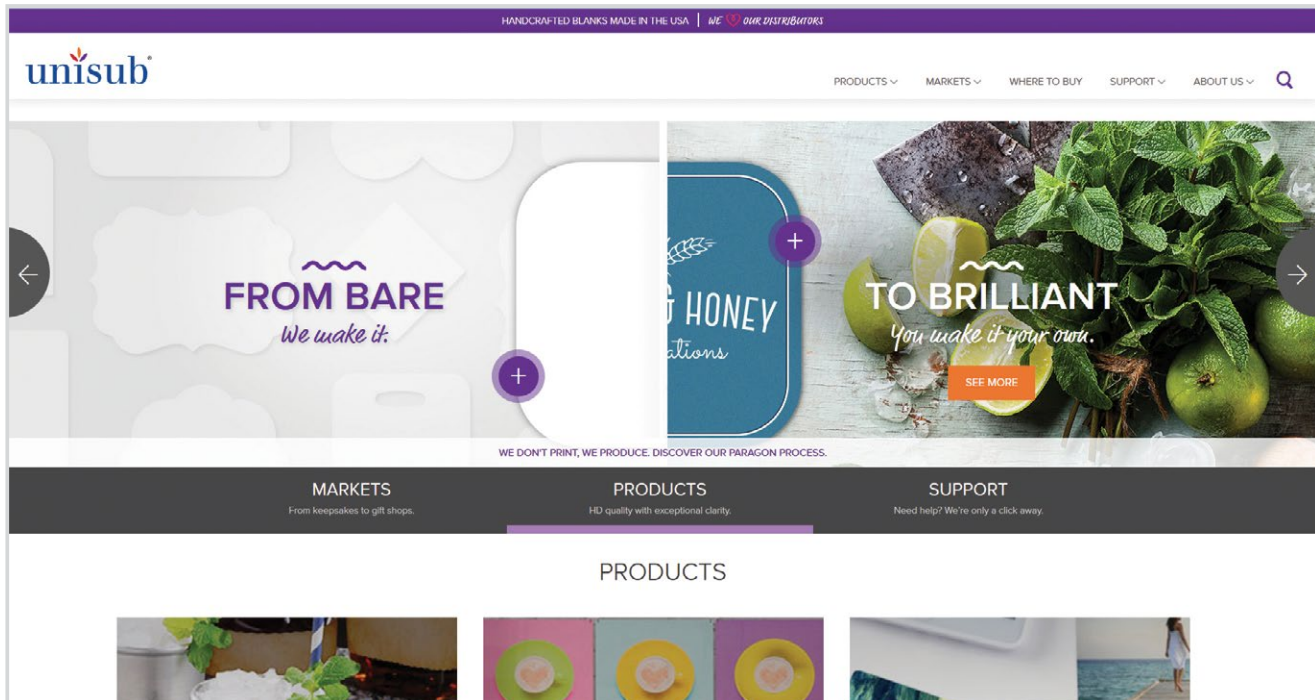
Material: AL Finish: Gloss White Thickness: 0.03" / 0.76 mm

TROPHY DISKS

ITEM #	DESCRIPTION	DIMENSIONS IN/MM	QTY
5729	Disk	1" / 25.4 mm	100
5572	Disk	2" / 50.8 mm	100

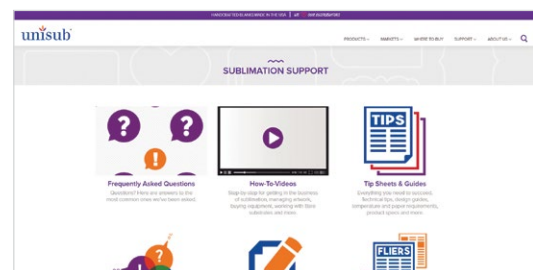
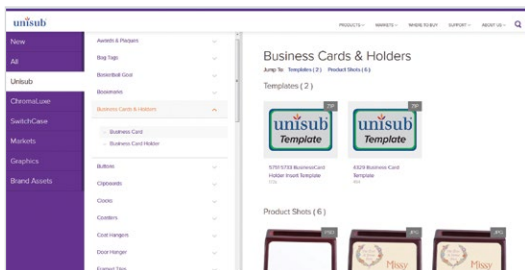


Visit our website at unisub.com for a variety of product information and sublimation support.



From inspiration to product specifications, you'll find:

- Product Templates
- Sublimation Tips & Tricks
- Product Photos & Free Graphic Patterns
- Targeted Marketing Programs
- Complete Catalog
- Authorized Distributors & their Locations



Search the website for Unisub and ChromaLuxe products quickly, connect with us on social media, and sign up to receive our e-newsletter today at unisub.com.

SHEETSTOCK

All substrates that we use to create stock products are available in sheets as well. This enables you to create your own products, shapes, and sizes from our durable materials.

STEEL SHEETSTOCK

Material: Steel Thickness: 0.023" / 0.58 mm

DIMENSIONS		one-sided	
		Gloss White	
		ITEM #	QTY
11.875" x 23.875"	301.6 x 606.4 mm	5960	10
23.875" x 47.875"	606.4 x 1216 mm	5961	30



ALUMINUM SHEETSTOCK - 0.03" / 0.76 MM

Material: Aluminum Thickness: 0.03" / 0.76 mm

DIMENSIONS		one-sided					
		Gloss White		Gloss Clear		Gloss Gold	
		ITEM #	QTY	ITEM #	QTY	ITEM #	QTY
12" x 24"	304.8 x 609.6 mm	5570	10	4570	10	4422	10
23.25" x 47"	590.5 x 1193.8 mm	5629	10				

ALUMINUM SHEETSTOCK - 0.045" / 1.14 MM

Material: Aluminum Thickness: 0.045" / 1.14 mm

DIMENSIONS		one-sided					
		Gloss White		Matte White		Semi-Gloss White	
		ITEM #	QTY	ITEM #	QTY	ITEM #	QTY
12" x 24"	304.8 x 609.6 mm	5623	10	4283	10	4657	10

DIMENSIONS		one-sided					
		Gloss Clear		Matte Clear		Semi-Gloss Clear	
		ITEM #	QTY	ITEM #	QTY	ITEM #	QTY
12" x 24"	304.8 x 609.6 mm	4284	10	4285	10	4658	10

HARDBOARD SHEETSTOCK - 0.125" / 3.18 MM

Material: Hardboard Thickness: 0.125" / 3.18 mm

DIMENSIONS		one-sided	
		Gloss White	
		ITEM #	QTY
15.5" x 18.5"	393.7 x 469.9 mm	10124	25



FR PLASTIC SHEETSTOCK - ONE-SIDED

Material: FRP Thickness: 0.09" / 2.29 mm

DIMENSIONS		one-sided			
		Gloss White		Matte White	
		ITEM #	QTY	ITEM #	QTY
11.5" x 23.25"	292.1 x 590.5 mm	5513	10	5529	10
23.25" x 23.25"	590.5 x 590.5 mm	5537	10	5535	10

FR PLASTIC SHEETSTOCK - TWO-SIDED

Material: FRP Thickness: 0.09" / 2.29 mm

DIMENSIONS		two-sided			
		Gloss White		Matte White	
		ITEM #	QTY	ITEM #	QTY
11.5" x 23.25"	292.1 x 590.5 mm	5528	10	5534	10
23.25" x 23.25"	590.5 x 590.5 mm	5538	10		

STARTER KITS

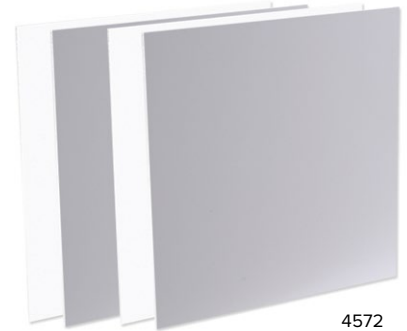
Get to know our substrates with a starter kit that consists of a combination of different items. Based on this learning experience, you'll see how easy it is to sublimate on various substrates.

Material: Aluminum **Finish:** All **Thickness:** 0.045" / 1.14 mm

CHROMALUXE STARTER KIT

ITEM #	DESCRIPTION	DIMENSIONS IN/MM	QTY
4572	ChromaLuxe starter kit	4" x 4" / 101.6 x 101.6 mm	1

24 pieces of assorted ChromaLuxe metal finishes of Gloss White, Matte White, Semi-Gloss White, Gloss Clear, Matte Clear, Semi-Gloss Clear.



Material: Aluminum **Finish:** Gloss White **Thickness:** 0.03" / 0.76 mm

Material: Hardboard **Finish:** Gloss White **Thickness:** 0.125" / 3.18 mm

Material: FRP **Finish:** Gloss White **Thickness:** 0.09" / 2.29 mm

Material: MDF **Finish:** Gloss White **Thickness:** 0.625" / 15.87 mm

UNISUB STARTER KIT

ITEM #	DESCRIPTION	DIMENSIONS IN/MM	QTY
4571	Unisub starter kit	6" x 6" / 152.4 x 152.4 mm	1

8 pieces each Aluminum Gloss White, FRP Gloss White, Hardboard Gloss White, MDF Gloss White.



PRODUCTION JIGS

Production jigs can help with the efficiency of your sublimation process when sublimating a group of the same products (name badges, coasters, bag tags, and more). To use, you simply insert the bare products into the slots so they are prevented from moving, and easily attach your printed grid. No need to sublimate each product individually. All jigs listed below are available with a 1-week lead time. Other jigs are special order items and require a 3-week lead time. We make custom jigs for a variety of purposes; work with your distributor to create one for any product. Place your custom jig order today!



4070



5929

Material: MDF (with Aluminum skeleton) **Thickness:** 0.75" / 19 mm

PRODUCTION JIGS

ITEM #	DESCRIPTION	DIMENSIONS IN/MM	QTY
5929	For ID tags (# 5588, 5916, 5949), 1.125" x 2" / 28.5 x 50.8 mm, prints 24	8.5" x 14" / 215.9 x 355.6 mm	1
4070	For Key chain (# 5524), 2.25" x 2.25" / 57.2 x 57.2 mm, prints 15	8.5" x 14" / 215.9 x 355.6 mm	1
4185	For Key chain (# 5995), 1.6" x 2.25" / 40.6 x 57.1 mm, prints 18	8.5" x 14" / 215.9 x 355.6 mm	1
5938	For Bag tags (# 5503), 2.75" x 4" / 69.8 x 101.6 mm, prints 6	8.5" x 14" / 215.9 x 355.6 mm	1

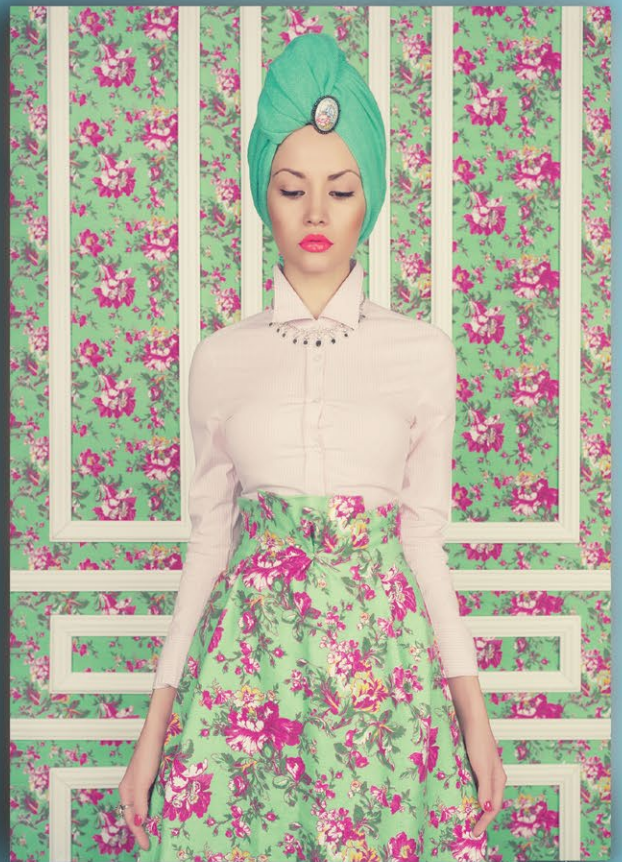


5935

Material: MDF **Thickness:** 0.75" / 19 mm

PRODUCTION JIGS - A3+ SIZE

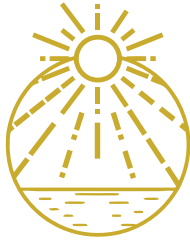
ITEM #	DESCRIPTION	DIMENSIONS IN/MM	QTY
5939	For Coaster (# 5677), 3.75" x 3.75" / 95.2 x 95.2 mm, prints 8	13" x 19" / 330.2 x 482.6 mm	1



ChromaLuxe®

True to your vision®

ChromaLuxe is the world's leading manufacturer of high definition sublimatable print media. Through dye sublimation, images are infused directly into specially coated sheets of metal, wood and table top panels to create the most vibrant, durable, and archival photo medium.



Fade Resistance



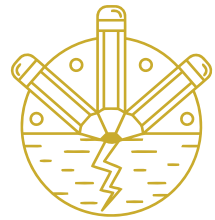
Flame Resistant



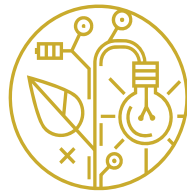
Moisture Resistant



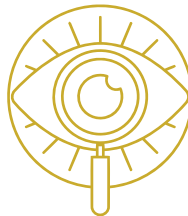
Chemical Resistant



Scratch Resistant



Eco-Friendly



Color Vibrancy



Finishes



HD METAL PRINTS

High definition photo panels with a radius corner for displaying artwork and photography.

Aluminum panels are lightweight, durable, made with recycled material and 100% recyclable. Metal prints are the perfect medium for displaying artwork and photography in a variety of applications from residential to commercial usage.

Material: AL Thickness: 0.045" / 1.14 mm

GLOSS WHITE

ITEM #	DIMENSIONS		QTY
4308	2" x 3"	50.8 x 76.2 mm	50
4302	4" x 4"	101.6 x 101.6 mm	10
4113	4" x 6"	101.6 x 152.4 mm	10
4294	5" x 5"	127 x 127 mm	10
4054	5" x 7"	127 x 177.8 mm	10
4114	5" x 10"	127 x 254 mm	10
4295	5" x 11"	127 x 279.4 mm	10
4296	5" x 17"	127 x 431.8 mm	10
4066	6" x 6"	152.4 x 152.4 mm	10
4071	8" x 8"	203.2 x 203.2 mm	10
5881	8" x 10"	203.2 x 254 mm	10
4130	8" x 12"	203.2 x 304.8 mm	10
4067	9" x 21"	228.6 x 533.4 mm	10
4072	10" x 10"	254 x 254 mm	10
4116	10" x 20"	254 x 508 mm	10
4273	10" x 30"	254 x 762 mm	10
4297	11" x 11"	279.4 x 279.4 mm	10
5882	11" x 14"	279.4 x 355.6 mm	10
4287	11" x 17"	279.4 x 431.8 mm	10
4059	11.75" x 11.75"	298.4 x 298.4 mm	10
4115	12" x 12"	304.8 x 304.8 mm	10
4131	12" x 18"	304.8 x 457.2 mm	10
4118	12" x 24"	304.8 x 609.6 mm	10
4111	14" x 18"	355.6 x 457.2 mm	10
4183	15" x 15"	381 x 381 mm	10
4020	15" x 18.75"	381 x 476.2 mm	10

GLOSS WHITE CONT.

ITEM #	DIMENSIONS		QTY
4117	16" x 16"	406.4 x 406.4 mm	10
4016	16" x 20"	406.4 x 508 mm	10
4129	16" x 24"	406.4 x 609.6 mm	10
4132	16" x 32"	406.4 x 812.8 mm	10
4133	18" x 36"	457.2 x 914.4 mm	10
4119	20" x 20"	508 x 508 mm	10
4120	20" x 24"	508 x 609.6 mm	10
4069	20" x 30**	508 x 762 mm	10
4121	24" x 24**	609.6 x 609.6 mm	10
4068	24" x 26**	609.6 x 660.4 mm	10
4122	24" x 30**	609.6 x 762 mm	10
4123	24" x 36**	609.6 x 914.4 mm	10
4280	30" x 30**	762 x 762 mm	10
4125	30" x 40**	762 x 1016 mm	10
5909	32" x 40**	812.8 x 1016 mm	9
5910	36" x 36***	914.4 x 914.4 mm	6
4404	38" x 58***	965.2 x 1473.2 mm	3
5912	40" x 60***	1016 x 1524 mm	3
5911	48" x 48***	1219.2 x 1219.2 mm	6

* Shipped on skid with dunnage

** Shipped on skid RTO at 3 week lead time to ship



Material: AL Thickness: 0.045" / 1.14 mm
SEMI-GLOSS WHITE

ITEM #	DIMENSIONS		QTY
4548	2" x 3"	50.8 x 76.2 mm	50
4549	4" x 4"	101.6 x 101.6 mm	10
4550	5" x 7"	127 x 177.8 mm	10
4674	6" x 6"	152.4 x 152.4 mm	10
4676	8" x 8"	203.2 x 203.2 mm	10
4551	8" x 10"	203.2 x 254 mm	10
4552	8" x 12"	203.2 x 304.8 mm	10
4678	10" x 10"	254 x 254 mm	10
4553	11" x 14"	279.4 x 355.6 mm	10
4680	12" x 12"	304.8 x 304.8 mm	10
4554	12" x 18"	304.8 x 457.2 mm	10
4555	16" x 20"	406.4 x 508 mm	10
4556	16" x 24"	406.4 x 609.6 mm	10
4557	20" x 30**	508 x 762 mm	10
4558	30" x 40**	762 x 1016 mm	10
4559	40" x 60**	1016 x 1524 mm	3

Material: AL Thickness: 0.045" / 1.14 mm
MATTE WHITE

ITEM #	DIMENSIONS		QTY
4310	2" x 3"	50.8 x 76.2 mm	50
4304	4" x 4"	101.6 x 101.6 mm	10
4055	5" x 7"	127 x 177.8 mm	10
4008	8" x 10"	203.2 x 254 mm	10
4009	11" x 14"	279.4 x 355.6 mm	10
4063	11.75" x 11.75"	298.4 x 298.4 mm	10
4018	16" x 20"	406.4 x 508 mm	10



Material: AL Thickness: 0.045" / 1.14 mm
GLOSS CLEAR

ITEM #	DIMENSIONS		QTY
4309	2" x 3"	50.8 x 76.2 mm	10
4303	4" x 4"	101.6 x 101.6 mm	10
4252	4" x 6"	101.6 x 152.4 mm	10
4298	5" x 5"	127 x 127 mm	10
4056	5" x 7"	127 x 177.8 mm	10
4260	5" x 10"	127 x 254 mm	10
4299	5" x 11"	127 x 279.4 mm	10
4300	5" x 17"	127 x 431.8 mm	10
4255	6" x 6"	152.4 x 152.4 mm	10
4182	8" x 8"	203.2 x 203.2 mm	10
5996	8" x 10"	203.2 x 254 mm	10
4135	8" x 12"	203.2 x 304.8 mm	10
4259	9" x 21"	228.6 x 533.4 mm	10
4254	10" x 10"	254 x 254 mm	10
4253	10" x 20"	254 x 508 mm	10
4274	10" x 30"	254 x 762 mm	10
4301	11" x 11"	279.4 x 279.4 mm	10
5997	11" x 14"	279.4 x 355.6 mm	10
4288	11" x 17"	279.4 x 431.8 mm	10
4065	11.75" x 11.75"	298.4 x 298.4 mm	10
4256	12" x 12"	304.8 x 304.8 mm	10
4136	12" x 18"	304.8 x 457.2 mm	10
4257	12" x 24"	508 x 609.6 mm	10
4021	15" x 18.75"	381 x 476.2 mm	10
4258	16" x 16"	406.4 x 406.4 mm	10
4017	16" x 20"	406.4 x 508 mm	10

* Shipped on skid with dunnage

** Shipped on skid RTO at 3 week lead time to ship

GLOSS CLEAR CONT.

ITEM	DIMENSIONS		QTY
4134	16" x 24"	406.4 x 609.6 mm	10
4137	16" x 32"	406.4 x 812.8 mm	10
4138	18" x 36"	457.2 x 914.4 mm	10
4275	20" x 20"	508 x 508 mm	10
4276	20" x 24"	508 x 609.6 mm	9
4251	20" x 30"	508 x 762 mm	6
4277	24" x 24"	609.6 x 609.6 mm	10
4278	24" x 30"	609.6 x 762 mm	10
4279	24" x 36"	609.6 x 914.4 mm	10
4281	30" x 30"	762 x 762 mm	10
4282	30" x 40"	762 x 1016 mm	10
4266	38" x 58"	965.2 x 1473.2 mm	3

Material: AL Thickness: 0.045" / 1.14 mm

SEMI-GLOSS CLEAR

ITEM	DIMENSIONS		QTY
4578	2" x 3"	50.8 x 76.2 mm	50
4579	4" x 4"	101.6 x 101.6 mm	10
4580	5" x 7"	127 x 177.8 mm	10
4675	6" x 6"	152.4 x 152.4 mm	10
4677	8" x 8"	203.2 x 203.2 mm	10

* Shipped on skid with dunnage

** Shipped on skid RTO at 3 week lead time to ship

SEMI-GLOSS CLEAR CONT.

ITEM	DIMENSIONS		QTY
4581	8" x 10"	203.2 x 254 mm	10
4582	8" x 12"	203.2 x 304.8 mm	10
4679	10" x 10"	254 x 254 mm	10
4583	11" x 14"	279.4 x 355.6 mm	10
4681	12" x 12"	304.8 x 304.8 mm	10
4584	12" x 18"	304.8 x 457.2 mm	10
4585	16" x 20"	406.4 x 508 mm	10
4586	16" x 24"	406.4 x 609.6 mm	10
4587	20" x 30"	508 x 762 mm	10
4588	30" x 40"	762 x 1016 mm	10
4589	40" x 60"	1016 x 1524 mm	3

Material: AL Thickness: 0.045" / 1.14 mm

MATTE CLEAR

ITEM	DIMENSIONS		QTY
4311	2" x 3"	50.8 x 76.2 mm	50
4305	4" x 4"	101.6 x 101.6 mm	10
4057	5" x 7"	127 x 177.8 mm	10
4012	8" x 10"	203.2 x 254 mm	10
4013	11" x 14"	279.4 x 355.6 mm	10
4061	11.75" x 11.75"	298.4 x 298.4 mm	10
4019	16" x 20"	406.4 x 508 mm	10



CHROMALUXE EXT

EXTENDED LIFE METAL PRINTS

ChromaLuxe EXT gives users the ability to take prints outdoors, or into direct sunlight with the image quality and durability they've come to expect from other ChromaLuxe products. These UV resistant panels come in a variety of common sizes to serve the signage, display and outdoor photography markets.

Features and Benefits:

- Image quality, depth and color
- Consistent high gloss finish
- Weathers well
- Easy to clean
- Graffiti resistant
- Chemical resistant
- Scratch resistant
- Impact resistant
- Wind resistant
- No need to laminate
- Thoroughly tested

Material: AL Thickness: 0.045" / 1.14 mm

GLOSS WHITE

ITEM	AVAILABLE SIZES		QTY
4750	5" x 7"	127 x 177.8 mm	10
4751	6" x 12"	152.4 x 304.8 mm	10
4752	8" x 10"	203.2 x 254 mm	10
4753	11" x 14"	279.4 x 355.6 mm	10
4754	12" x 18"	304.8 x 457.2 mm	10
4755	18" x 24"	457.2 x 609.6 mm	10
4756	20" x 30"	508 x 762 mm	10
4757	24" x 30"	609.6 x 762 mm	10
4758	24" x 36"	609.6 x 914.4 mm	10
4759	30" x 40"	762 x 1016 mm	10
4760	40" x 60"	1016 x 1524 mm	3

Available in full sheets (49" x 97" / 1244.6 x 2463.8 mm). Contact us for additional information and pricing.

* Shipped on skid with dunnage ** Shipped on skid RTO at 3 week lead time to ship

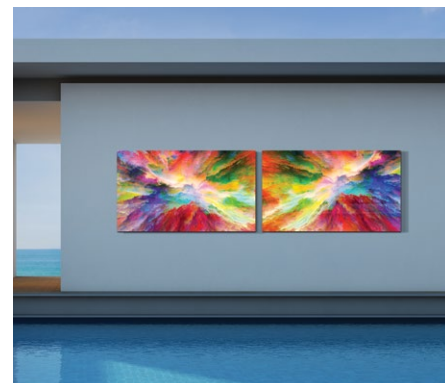
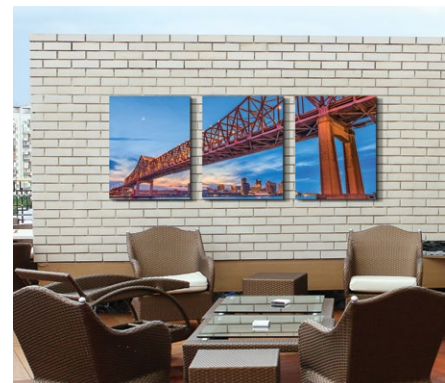
The life of this product is directly linked to the ink used during the printing process.

Additional inks in test currently. List of ratings will be updated accordingly.

*Provides 21-month life for photo based images mounted vertically facing south in Florida. Other locations, orientations or shading will significantly extend the life of the image.

**Utilization of full density (1.0 or higher) prints as sign graphics will result in 3 years or more of life.

UW will provide free replacement panels for any photo images not satisfying the end customer for two years and full color signs for three years.





CONNECTIONS HANGING SYSTEM FOR HD METAL PRINTS

ChromaLuxe Connections offer gallery quality wall art that is easy to mount using the Connections Hanging System and a few basic tools. Pair multiple ChromaLuxe metal prints together creating a collage of images or use one image across the entire series. Use the jig, graph paper and hanging mount to easily display ChromaLuxe Connections in any home, office or gallery space.

CONNECTIONS ARE NOT SOLD AS A KIT. LOOK AT THE DESCRIPTION OF EACH LAYOUT TO KNOW WHICH ITEMS TO ORDER.



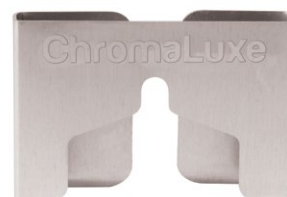
ITEM #	DESCRIPTION	TOTAL SIZE	QTY
4697	L-jig for hanging system	6.5" x 6.5" / 165.1 x 165.1 mm	5

Use this jig, graph paper and hanging mount to easily display ChromaLuxe Connections in any home, office or gallery space.



ITEM #	DESCRIPTION	TOTAL SIZE	QTY
4698	Hanging Mount	0.625" / 15.88 mm Depth – 3"x2" / 76.2 x 50.8 mm	20

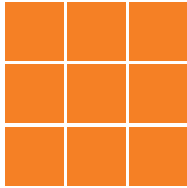
Brushed Silver mount with channel for hanging. Pre-applied adhesive for attachment to aluminum photo panel.



ITEM #	DESCRIPTION	QTY
4699 -4710	Graph paper template	5

Template Layout Options (Connections graph paper templates)





ITEM #	DESCRIPTION	TOTAL SIZE
4699	Layout 1	32" x 32" / 812.8 x 812.8 mm
	9 x item # 4072 (10" x 10" / 254 x 254 mm)	
	9 x item # 4254 (10" x 10" / 254 x 254 mm)	



ITEM #	DESCRIPTION	TOTAL SIZE
4700	Layout 2	35" x 14" / 889 x 355.6 mm
	3 x item # 5882 (11" x 14" / 279.4 x 355.6 mm)	
	3 x item # 4553 (11" x 14" / 279.4 x 355.6 mm)	
	3 x item # 4009 (11" x 14" / 279.4 x 355.6 mm)	
	3 x item # 5997 (11" x 14" / 279.4 x 355.6 mm)	
	3 x item # 4583 (11" x 14" / 279.4 x 355.6 mm)	
	3 x item # 4013 (11" x 14" / 279.4 x 355.6 mm)	



ITEM #	DESCRIPTION	TOTAL SIZE
4701	Layout 3	38" x 20" / 965.2 x 508 mm
	1 x item # 4016 (16" x 20" / 406.4 x 508 mm)	
	1 x item # 4067 (9" x 21" / 228.6 x 533.4 mm)	
	2 x item # 4072 (10" x 10" / 254 x 254 mm)	



ITEM #	DESCRIPTION	TOTAL SIZE
4702	Layout 4	23" x 20" / 584.2 x 508 mm
	1 x item # 4016 (16" x 20" / 406.4 x 508 mm)	
	3 x item # 4066 (6" x 6" / 152.4 x 152.4 mm)	



ITEM #	DESCRIPTION	TOTAL SIZE
4703	Layout 5	30" x 20" / 762 x 508 mm
	1 x item # 4016 (16" x 20" / 406.4 x 508 mm)	
	6 x item # 4066 (6" x 6" / 152.4 x 152.4 mm)	



ITEM #	DESCRIPTION	TOTAL SIZE
4704	Layout 6	50" x 20" / 1270 x 508 mm
	3 x item # 4016 (16" x 20" / 406.4 x 508 mm)	
	3 x item # 4017 (16" x 20" / 406.4 x 508 mm)	
	3 x item # 4018 (16" x 20" / 406.4 x 508 mm)	
	3 x item # 4019 (16" x 20" / 406.4 x 508 mm)	
	3 x item # 4555 (16" x 20" / 406.4 x 508 mm)	
	3 x item # 4585 (16" x 20" / 406.4 x 508 mm)	

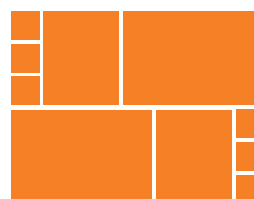
ITEM #	DESCRIPTION	TOTAL SIZE
4705	Layout 7	54" x 30" / 1372 x 762 mm
	1 x item # 4069 (20" x 30" / 508 x 762 mm)	
	2 x item # 4016 (16" x 20" / 406.4 x 508 mm)	



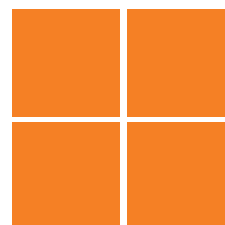
ITEM #	DESCRIPTION	TOTAL SIZE
4706	Layout 8	42" x 30" / 1066.8 x 762 mm
	1 x item # 4069 (20" x 30" / 508 x 762 mm)	
	2 x item # 4067 (9" x 21" / 228.6 x 533.4 mm)	
	2 x item # 4072 (10" x 10" / 254 x 254 mm)	



ITEM #	DESCRIPTION	TOTAL SIZE
4707	Layout 9	54" x 41" / 1371.6 x 1041.4 mm
	2 x item # 4069 (20" x 30" / 508 x 762 mm)	
	2 x item # 4016 (16" x 20" / 406.4 x 508 mm)	
	6 x item # 4066 (6" x 6" / 152.4 x 152.4 mm)	



ITEM #	DESCRIPTION	TOTAL SIZE
4708	Layout 10	33" x 33" / 838.2 x 838.2 mm
	4 x item # 4117 (16" x 16" / 406.4 x 406.4 mm)	
	4 x item # 4258 (16" x 16" / 406.4 x 406.4 mm)	



ITEM #	DESCRIPTION	TOTAL SIZE
4709	Layout 11	41" x 30" / 1041.4 x 762 mm
	2 x item # 5882 (11" x 14" / 279.4 x 355.6 mm)	
	4 x item # 5881 (8" x 10" / 203.2 x 254 mm)	



ITEM #	DESCRIPTION	TOTAL SIZE
4710	Layout 12	44" x 29" / 1117.6 x 736.6 mm
	4 x item # 5882 (11" x 14" / 279.4 x 355.6 mm)	
	2 x item # 5881 (8" x 10" / 203.2 x 254 mm)	





CREATIVE BORDER AND CIRCLE METAL PRINTS

Offer customers vivid image reproductions on stylish metal print shapes! Creative Border metal prints are a great addition to any product line that will transform photos into their own piece of art. Use images alone or create a digital border to match any home décor.



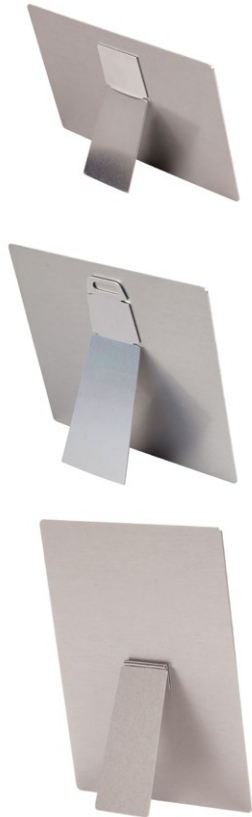
Material: AL Thickness: 0.045" / 1.14 mm

ITEM #	DESCRIPTION	DIMENSIONS	QTY	SHAPE
4150	Belfast photo panel, small	7.5" x 7.5" / 190.5 x 190.5 mm	10	
4087	Benelux photo panel, small	11.37" x 8" / 288.8 x 203.2 mm	10	
4149	Berlin photo panel, small	11.93" x 7.93" / 303 x 201.4 mm	10	
4167	Crete photo panel, small	11.5" x 5.75" / 292.1 x 146 mm	10	
4093	Fiji photo panel, small	8" x 8" / 203.2 x 203.2 mm	10	
4089	Milan photo panel, small	8" x 8" / 203.2 x 203.2 mm	10	
4148	Pamplona photo panel, small	7.75" x 7.75" / 196.9 x 196.9 mm	10	
4158	Prague photo panel, small	7.9" x 7.9" / 200.7 x 200.7 mm	10	
4094	Sydney photo panel, small	10" x 8" / 254 x 203.2 mm	10	
4144	Circle Photo panel	8" / 203.2 mm	10	
4145	Circle Photo panel	11" / 279.4 mm	10	
4147	Circle Photo panel	20" / 508 mm	10	



DISPLAYS

We offer a range of options to mount or hang your sublimated ChromaLuxe panels: Easels in different sizes to fit the size of your panel, or mounting blocks with keyholes.



Material: AL **Thickness:** 0.04" / 1.02 mm

EASEL

ITEM #	DESCRIPTION	DIMENSIONS	QTY
4220	Small easel Panels up to 6" x 6" / 152.4 x 152.4 mm Landscape up to 5" x 11" / 127 x 279.4 mm	1.5" x 3.5" / 38.1 x 88.9 mm	20
4514	Small easel Panels up to 6" x 6" / 152.4 x 152.4 mm Landscape up to 5" x 11" / 127 x 279.4 mm	1.5" x 3.5" / 38.1 x 88.9 mm	100
4058	Medium easel Panels 8" x 8" to 11" x 11" / 279.4 x 279.4 mm Portrait up to 5" x 11" / 127 x 279.4 mm	1.99" x 5.5" / 50.6 x 139.7 mm	20
4060	Medium easel Panels 8" x 8" to 11" x 11" / 279.4 x 279.4 mm Portrait up to 5" x 11" / 127 x 279.4 mm	1.99" x 5.5" / 50.6 x 139.7 mm	100
4695	Medium hinged easel Panels 8" x 8" to 12" x 12" / 279.4 x 279.4 mm Portrait up to 5" x 11" / 127 x 279.4 mm	1.9" x 4.9" / 59.6 x 104.5 mm	20
4696	Medium hinged easel	1.9" x 4.9" / 48.2 x 124.4 mm	100

Easel with two-sided adhesive pre-applied. This easel can be used for table top display of ChromaLuxe prints.



Material: AL **Finish:** Silver

HANGING MOUNT

ITEM #	DIMENSIONS	QTY
4698	0.625" / 15.88 mm Depth – 3"x2" / 76.2 x 50.8 mm	20

Brushed Silver mount with channel for hanging. Pre-applied adhesive for attachment to aluminum photo panel.

Material: AL **Thickness:** 0.04" / 1.02 mm

ALUMINUM SHADOW MOUNT DISPLAY SET

ITEM #	DESCRIPTION	DIMENSIONS	QTY
4005	Shadow mount display set Supports sizes up to 16" x 20" / 406.4 x 508 mm	5" x 5" / 127 x 127 mm	10
4007	Clear round plastic bumpers	0.25" / 6.3 mm	200

Silver display with radius corners and slot for hanging. Wood spacer block has pre-applied adhesive on front and back for easy attachment to aluminum mount and photo panel for wall display.



Material: MDF **Finish:** Raw **Thickness:** 0.5" / 12.7 mm

SHADOW MOUNT DISPLAY SET

ITEM #	DESCRIPTION	DIMENSIONS	QTY
5902	Two-piece shadow mount display set Supports sizes up to 16" x 20" / 406.4 x 508 mm	2" x 2" / 50.8 x 50.8 mm + 3" x 4" / 76.2 x 101.6 mm	10

MDF display blocks come with pre-applied adhesive and keyhole



Material: MDF **Finish:** Matte Black **Thickness:** 0.5" / 12.7 mm

BLACK SHADOW DISPLAYS

ITEM #	DESCRIPTION	DIMENSIONS	QTY
4006	Shadow display black Use with 6" x 6" / 152.4 x 152.4 mm and larger	4.5" x 4.5" / 114.3 x 114.3 mm	20
5903	Shadow display black Use with 11" x 14" / 279.4 x 355.6 mm and larger	9" x 12" / 228.6 x 304.8 mm	10
5904	Shadow display black Use with 11.625" x 16" / 295.2 x 406.4 mm and larger	11.625" x 16" / 295.3 x 406.4 mm	10



MDF display blocks come with pre-applied adhesive and keyhole



CHROMALUXE METAL FRAMES

ChromaLuxe Frames, designed specifically for ChromaLuxe Metal prints, provide another display option for images presented on the highest quality print media. These aluminum frames use a channel design that is unique to ChromaLuxe, allowing metal prints to be displayed easier than ever before with either a traditional or more finished look. Available in all of our most popular sizes, ChromaLuxe frames can be used as either a classic inset frame, or on the back as a floating option.

Material: AL **Color:** Silver **Thickness:** 1.125" / 28.58 mm

SILVER

ITEM #	DIMENSIONS		QTY
4521	8.75"	222.25 mm	10
4522	10.75"	273.05 mm	10
4479	11.75"	298.45 mm	10
4480	12.75"	323.85 mm	10
4481	14.75"	374.65 mm	10
4482	16.75"	425.45 mm	10
4483	18.75"	476.25 mm	10
4484	20.75"	527.05 mm	10
4485	24.75"	628.65 mm	10
4486	30.75"	781.05 mm	10
4651**	12'	3657.6 mm	36

Material: AL **Color:** Black **Thickness:** 1.125" / 28.58 mm

BLACK

ITEM #	DIMENSIONS		QTY
4517	8.75"	222.25 mm	10
4518	10.75"	273.05 mm	10
4471	11.75"	298.45 mm	10
4472	12.75"	323.85 mm	10
4473	14.75"	374.65 mm	10
4474	16.75"	425.45 mm	10
4475	18.75"	476.25 mm	10
4476	20.75"	527.05 mm	10
4477	24.75"	628.65 mm	10
4478	30.75"	781.05 mm	10
4650**	12'	3657.6 mm	36

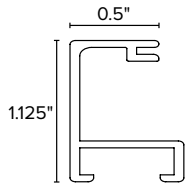
**Shipped on skid RTO at 3 week lead time to ship

HARDWARE PIECES

ITEM #	DIMENSIONS	QTY
4652	Sawtooth Hanger	1000
4653	Angled Back Plate	1000
4654	Tapped Angle	1000
4655	Retainer Clip	1000

HARDWARE KIT

ITEM #	DESCRIPTION	QTY
4503	Case includes enough hardware for 5 complete frames:	5
	20 – Tapped Angle	
	20 – Back Plate	
	20 – Retainer Clip	
	5 – Sawtooth Hanger	



WOOD PHOTO PANELS

Each have a beveled edge with keyholes on the back for easy hanging in a home, office or gallery. Images are infused into specially coated wood panels to provide the ultimate image clarity and vibrancy with exceptional detail and color resolution. ChromaLuxe wood prints offer a traditional option to display all your photography and are extremely durable, offering scratch and abrasion resistance without hiding your image behind glass. Available in a variety of sizes, ChromaLuxe wood photo panels are the perfect choice for residential and commercial spaces.



Material: MDF **Finish:** Gloss White **Thickness:** 0.625" / 15.88 mm

WOOD PHOTO PANEL

ITEM #	DESCRIPTION	DIMENSIONS		QTY
4722	W/Dual Keyhole and Kickstand	5" x 7"	127 x 178 mm	27
4720	W/Dual Keyhole and Kickstand	6" x 6"	152 x 152 mm	28
4724	W/Dual Keyhole and Kickstand	8" x 8"	203 x 203 mm	14
4286	W/Dual Keyhole and Kickstand	8" x 10"	203.2 x 254 mm	14
4050	Keyhole only	9" x 18"	228.6 x 457.2 mm	10
5877	Keyhole only	11" x 14"	279.4 x 355.6 mm	9
5946	Keyhole only	11.6" x 11.6"	294.6 x 294.6 mm	9
4126	Keyhole only	16" x 20"	406.4 x 508 mm	5
4127	Keyhole only	20" x 30"	508 x 762 mm	4



Wood photo panels have a black beveled edge and back with key holes for easy hanging.

Material: MDF Maple Veneer **Finish:** Matte Clear **Thickness:** 0.625" / 15.88 mm

NATURAL WOOD PHOTO PANEL

ITEM #	DESCRIPTION	DIMENSIONS		QTY
4723	W/Dual Keyhole and Kickstand	5" x 7"	127 x 178 mm	27
4721	W/Dual Keyhole and Kickstand	6" x 6"	152 x 152 mm	28
4528	W/Dual Keyhole and Kickstand	8" x 8"	203.2 x 203.2 mm	14
4529	W/Dual Keyhole and Kickstand	8" x 10"	203.2 x 254 mm	14
4530	Keyhole only	10" x 10"	254 x 254 mm	14
4531	Keyhole only	11" x 14"	279.4 x 355.6 mm	9
4532	Keyhole only	16" x 20"	406.4 x 508 mm	5
4533	Keyhole only	20" x 30"	508 x 762 mm	4
4534	Keyhole only	30" x 40"	762 x 1016 mm	2



Natural wood photo panels are made up of a MDF core with A-grade maple veneer face. Natural beveled edge and back with key holes for easy hanging.

DESKTOP PHOTO PANELS

Desktop photo panels are ready to display and available in a variety of options.



Material: HB **Finish:** Gloss White **Thickness:** 0.25" / 6.35 mm
DESKTOP PHOTO PANELS WITH EASEL - FLAT TOP

ITEM #	DESCRIPTION	DIMENSIONS		QTY
5857	Rectangle photo panel with easel	5" x 7"	127 x 177.8 mm	12
5859	Rectangle photo panel with easel	8" x 10"	203.2 x 254 mm	12
5931	Square photo panel with easel	6" x 6"	152.4 x 152.4 mm	10
5932	Square photo panel with easel	10" x 10"	254 x 254 mm	12

Easeled photo panels have a black radius edge and black back with matching pre-attached easel for easy table top display.

Material: HB **Finish:** Gloss White **Thickness:** 0.25" / 6.35 mm
DESKTOP PHOTO PANELS WITH EASEL - ARCH TOP

ITEM #	DESCRIPTION	DIMENSIONS		QTY
5858	Arch top photo panel with easel	5" x 7"	127 x 177.8 mm	12
5860	Arch top photo panel with easel	8" x 10"	203.2 x 254 mm	12




Easeled photo panels have a black radius edge and black back with matching pre-attached easel for easy table top display.

Material: HB **Finish:** Gloss White **Thickness:** 0.25" / 6.35 mm
HINGED DESKTOP PHOTO PANELS - FLAT TOP

ITEM #	DESCRIPTION	DIMENSIONS	QTY
5863	Duo-panel set (2 pcs)	3.5" x 5" / 88.9 x 127 mm + 5" x 7" / 127 x 177.8 mm	15 sets
4002	Tri-panel set (3 pcs)	3.5" x 5" / 88.9 x 127 mm (x2) + 5" x 7" / 127 x 177.8 mm	10 sets
5873	Vertical photo panel (left & right panels only)	5" x 7" / 127 x 177.8 mm (x2)	10

Material: HB Finish: Gloss White Thickness: 0.25" / 6.35 mm

CREATIVE BORDER DESKTOP PHOTO PANEL WITH DUAL KEYHOLE & KICKSTAND

ITEM #	DESCRIPTION	DIMENSIONS	QTY	SHAPE
4746	Benelux with dual keyhole & kickstand	5" x 7" / 127 mm x 178 mm	20	
4747	Berlin with dual keyhole & kickstand	5" x 7" / 127 mm x 178 mm	20	
4748	Prague with dual keyhole & kickstand	5.6" x 5.6" / 142 mm x 142 mm	20	



ChromaLuxe Creative Border Photo Panels with keyholes and kickstand are an excellent choice for those wanting to showcase their photo art as either a desktop item or wall display. Each panel comes with four dual-use keyholes capable of holding a kickstand for desktop use or nail for wall display. Keyholes are located on all four sides on the back of each panel for either landscape or portrait display. Panels have a black back and edge and come with a black kickstand.

Material: HB Finish: Gloss White Thickness: 0.25" / 6.35 mm

KICKSTAND PANELS

ITEM #	DIMENSIONS	QTY
4612	6" x 6" 152.4 x 152.4 mm	20
4610	5" x 7" 127 x 177.8 mm	20
4609	8" x 10" 203.2 x 254 mm	15
4613	10" x 10" 254 x 254 mm	15



Slots are located on all four sides on the back of each panel for either landscape or portrait display. Panels have a black back and edge and come with a black kickstand.



Material: HB Finish: Semi-Gloss White Thickness: 0.25" / 6.35 mm

KICKSTAND PANELS

ITEM #	DIMENSIONS	QTY
4616	6" x 6" 152.4 x 152.4 mm	20
4601	5" x 7" 127 x 177.8 mm	20
4602	8" x 10" 203.2 x 254 mm	15
4617	10" x 10" 254 x 254 mm	15

Slots are located on all four sides on the back of each panel for either landscape or portrait display. Panels have a black back and edge and come with a black kickstand.



TABLE TOPS

Table tops provide you the option of customizing furniture for a variety of residential and commercial spaces. Use logos, graphics or photographs to create a stylish piece of furniture. Bases not included. ChromaLuxe table tops offer HD quality image reproduction while providing resistance to stain, scratch, moisture and chemicals. Table tops are pre-banded with black PVC banding.

Material: MR-MDF **Finish:** Semi-Gloss White **Thickness:** 0.75" / 19 mm

SQUARE TABLE TOP

ITEM #	DESCRIPTION	DIMENSIONS		QTY
4397	Table top, square	23.75" x 23.75"	603.2 x 603.2 mm	6
4399	Table top, square	29.5" x 29.5"	749.3 x 749.3 mm	6

Material: MR-MDF **Finish:** Semi-Gloss White **Thickness:** 0.75" / 19 mm

ROUND TABLE TOP

ITEM #	DESCRIPTION	DIMENSIONS		QTY
4398	Table top, round	23.625"	600.07 mm	6
4400	Table top, round	29.375"	746.12 mm	6



FLOORING

Specially coated sheets of moisture-resistant high density fiberboard are cut into workable panels and provide a beautiful, durable, easy-to-use option for customizing commercial and residential spaces.

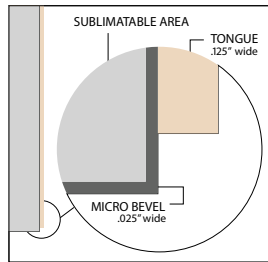


Material: Moisture-Resistant High Density Fiberboard
Finish: Low Gloss White / Flooring Coating **Thickness:** 0.375"/9.52mm

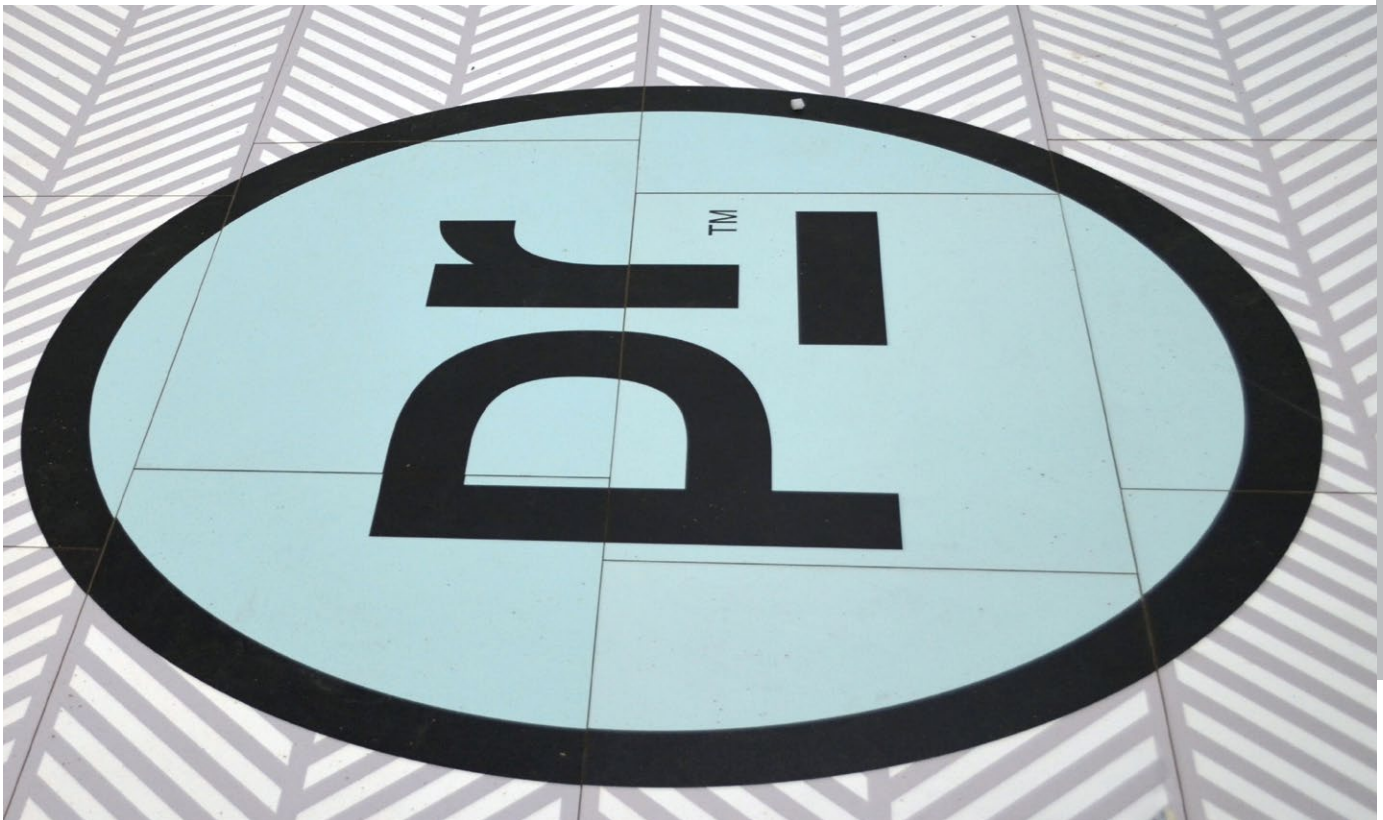
ITEM #	DIMENSIONS		CASE QTY	CASE WEIGHT
4714	16.125" x 24.125"	409.5mm x 612.8mm	1*	5.1 lbs / 2.3 kg
4732	24.125" x 24.125"	612.8mm x 612.8mm	1*	7.6 lbs / 3.5 kg

Skid dimension and weight information:

- 40" x 50" Domestic Skid – 60 lbs.
 - Will mix up to 200 pieces per skid
- Order will be packed with materials to protect all surfaces from damage. Total weight of order is panel weight + skid weight.



*Packed and shipped on a skid. MOQ – 25 cases



ChromaLuxe®

True to your vision®

www.chromaluxe.com

Universal Woods
Louisville, Kentucky
USA
info@chromaluxe.com

Universal Woods EMEA
Boom
Belgium
info.emea@chromaluxe.com

Universal Woods AU
West Pymble, New South Wales
Australia
info.au@chromaluxe.com

unisub®

From Bare to Brilliant™

www.unisub.com

Universal Woods
Louisville, Kentucky
USA
info@unisub.com

Universal Woods EMEA
Boom
Belgium
info.emea@unisub.com

Universal Woods AU
West Pymble, New South Wales
Australia
info.au@unisub.com



#5575
\$2.50

Unisub and ChromaLuxe are registered trademarks of Universal Woods, Inc. ©2018



MADE IN THE USA