

**MUTOH**



# Mark II series

64" – 162 cm LED UV Printers



*Roll-to-Roll*



*Roll-to-Roll & Rigid*



**ValueJet 1638UR Mark II**

**ValueJet 1638UH Mark II**

# Mark II series

## 64" – 162 cm LED UV Printers

Shorten your production time, expand your range of applications and produce real **added value high quality graphics** with Mutoh's Japanese-made Mark II series **6-colour (C, M, Y, K, White, Clear)** printers.

Integrating two long-life UV LED lamps and two piezo print heads delivering **print resolutions up to 1440 x 1440 dpi**, these printers will deliver **instant dry output**, ready for application or post-treatment.

The Mark II series printers feature **new print modes and industry leading features** such as Mutoh's proprietary VerteLith™ Clear Tone screening, Intelligent Interweaving UV and DropMaster technologies.

Last but not least, the printers also come with **Mutoh's new genuine VerteLith™ RIP software with advanced 6 channel support**.

Unleash your creativity and discover numerous new applications. Add value with **white and clear inks** which enable printing on to transparent and non-white substrates, multi-layer graphics and spot varnish effects.

The Mark II series printers are ideally suited for the **production of high quality graphics** : in-store promotional prints & deco graphics, POP & retail graphics, floor & window prints, customised wall décor prints, stickers, sign blanks, exhibition graphics, fine art prints, packaging samples and more.

### ValueJet 1638UR Mark II



#### Roll-to-Roll

Roll-to-Roll - 64" – 162 cm / Roll weights 30 kg, 40 kg or 100 kg

### ValueJet 1638UH Mark II



#### Roll-to-Roll & Rigid

Roll-to-Roll setup : 64" – 162 cm / Roll weights 30 kg or 40 kg  
Rigid setup : 64" – 162 cm / Thickness 15 mm – Weight 15 kg – Automated media thickness measurement

#### MARK II SERIES AT A GLANCE

- UV LED dual head, dual lamp 162 cm (64") wide printers
- C, M, Y, K LED UV inks, White & Varnish for a luxurious or specialty finish
- Print on white, transparent and non white substrates
- Instant dry output, ready for use or second stage treatment
- Energy efficient – low heat generation, ideal for heat sensitive media
- Intelligent Interweaving i<sup>2</sup> UV and DropMaster integrated
- VerteLith™ Clear Tone screening delivers best possible gradients and skin tones
- Fit for regular offices, home based businesses or small retail environments
- Low odour, zero VOC inks – no air purifier needed
- Excellent adhesion and scratch resistance
- US11 Greenguard Gold certified inks for indoor applications
- US11 inks : Toy Certification

i<sup>2</sup> Intelligent Interweaving UV drastically reduces banding and gloss banding effects



Automatically adjusts the drop throw distance, regardless of the thickness of the media loaded



US11 inks are Greenguard Gold certified for indoor applications including offices, classrooms and healthcare environments



Mutoh cool UV cure technology delivers low energy consumption and instant dry output



Mutoh VerteLith™ Clear Tone screening will produce the best possible gradients and skin tones



US11 inks are compliant with the European Standard on safety of toys EN 71-3 – part 3.



Low odour, non HAP inks - no air purifier needed. Fit for any working environment and interior décor prints





## VerteLith™ - Genuine Mutoh RIP software

A complete 'in the box' print solution with advanced 6-channel support to effortlessly handle a broad range of print jobs, including multi-layer artwork requiring white and/or varnish layers.

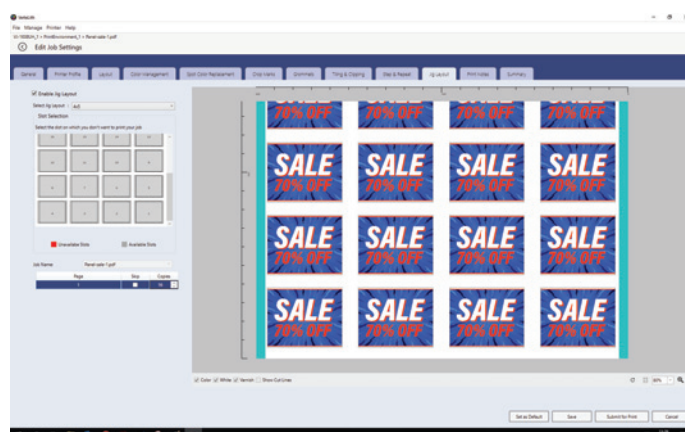
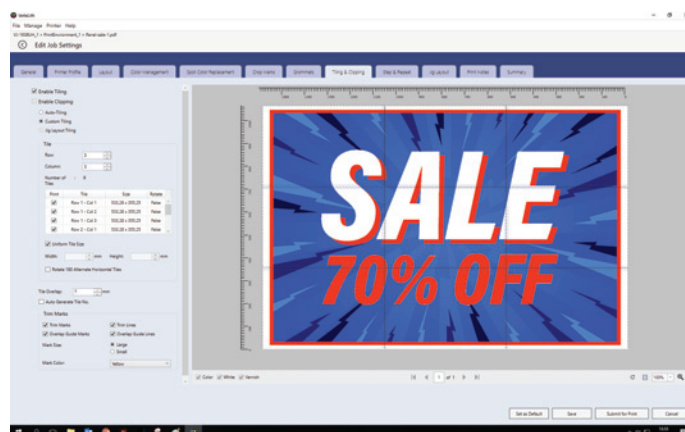
The VerteLith™ software is built around the Harlequin host renderer, ensuring fast RIP processing times for both PDF and PostScript files, as well as perfect handling of transparencies and spot colours.

To avoid waste, the software includes powerful preview functionality, supporting soft proofing and on screen RIP previewing of the actual printed dots before printing.

By integrating halftone screening specifically developed for inkjet, Mutoh VerteLith™ 'Clear Tone' will produce the best possible gradients and skin tones.

To complete your starter software toolbox, VerteLith™ can also auto-generate white and/or varnish layers based on a selection of presets and it allows you to perform ink-cost calculation prior to printing.

Your output can be perfectly prepared for the next step in your production process via the finishing toolset, allowing you to perform flexible tiling and put crop marks or grommets.





**ValueJet 1638UR Mark II**

**ValueJet 1638UH Mark II**

## KEY SPECIFICATIONS

Print Technology	Drop-on-demand Micro Piezo Inkjet Technology
Print Head	2 (staggered setup)
Nozzle Configuration	180 nozzles x 8 lines (each head)
Drop Mass Range (pl)	3.8 to 28
RIP Software	Included. Mutoh's genuine VerteLith RIP with advanced 6 colour support.

## PERFORMANCE

	4C Ink set-up CMYK output 1 Layer <sup>(3)</sup>	6C Ink set-up (CMYK+White+Varnish) CMYK output 1 Layer <sup>(3)</sup>
Top speed	22.7 m <sup>2</sup> /h	11.2 m <sup>2</sup> /h
Applications for distance viewing (e.g. perforated film)	16.7 m <sup>2</sup> /h	8.3 m <sup>2</sup> /h
White media	3 - 12.8 m <sup>2</sup> /h	1.4 - 6.4 m <sup>2</sup> /h
Transparent or non-white media	3 - 12.8 m <sup>2</sup> /h <sup>(1)</sup>	1.4 - 6.4 m <sup>2</sup> /h <sup>(2)</sup>

(1) Some media have embedded UV blockers. These reduce lamp efficiency and may require more passes to allow more UV dose.

(2) In 6C set-up a layer of white can be added to improve the colour power on transparent and non-white substrates. Adding extra layers of White and/or Varnish reduces the output speed

(3) Various output resolutions are available: 360 x 1080 dpi, 720 x 720 dpi, 720 x 1080 dpi, 720 x 1440 dpi and 1440 x 1440 dpi

## MEDIA SPECIFICATIONS

	ValueJet 1638UR Mark II	ValueJet 1638UH Mark II
Min./Max. Media Width - Max. Print Width	182 mm (7.17") / 1625 mm (63.97") - 1615 mm (63.58")	
Head Heights / Max. Media Thickness	1.5 mm (low) / 0.3 mm - 2.5 mm (high) / 1.3 mm	Automatic <sup>(1)</sup> / 15 mm
Media Measurements <sup>(2)</sup>	Ø 150 mm / 2" & 3" / 30 kg	
Media Measurements <sup>(2)</sup>	Ø 150 mm / 2" & 3" / 30 kg	
Take-up Systems	30 <sup>(3)</sup> , 40 and 100 kg	30 <sup>(3)</sup> and 40 kg
Media Measurements <sup>(2)</sup>	Ø 150 mm / 2" & 3" / 30 kg	
Min. / Max. Recommended Media Length Rigid	/	200 mm (7.87") / 1200 mm (47.24")
Max. Media Weight Rigid	/	15 kg

(1) Media thickness is measured electronically and head height is automatically adjusted

(2) Standard non-motorised roll-off system

(3) During printing with UV ink, standard rolls increase in diameter and weight versus roll-off side. To handle full rolls, select the 40 kg winder (max. diameter 250 mm).

## INK SPECIFICATIONS

Ink Types	LED UV inks - Rigid (UH21 - 1638UH2) and Flexible (US11 - 1638UR2 & 1638UH2) types
Ink Colours / Volume	CMYK + Varnish : 220 ml cassette / 800 ml pack <sup>(1)</sup> , White : 220 ml cassette / 500 ml pack <sup>(1)</sup>
Ink Setup	CMYK (CCMMYYKK), CMYK + Varnish (CMYK+2xVa+2xClean) or CMYK + White + Varnish (CMYK+2xWh+2xVa)
Compatibility	ABS, Aluminium board, Cardboard, Fluted & corrugated boards, Glass, heat sensitive flex media like Polyolefin-based (PVC-Free) self-adhesive films, Non-woven, PC, PE, PET, PES, PMMA (extruded), PP, PS, PVC <sup>(2)</sup>
Ink Drying System	2 Long life LED UV curing lamps (LED UV Lamp Life : 7,600 hours)

(1) 800 ml / 500 ml pack requires optional adapter

(2) Ink adhesion will vary among media type and brand. Individual testing is required in function of your specific application.

## VJ-1638UR2 MACHINE MEASUREMENTS

Width x Depth x Height	2983 x 818 x 1261 mm
Weight	189 kg (152 kg printer + 37 kg stand)

Distributed by

## VJ-1638UH2 MACHINE MEASUREMENTS

Width x Depth x Height	2983 x 818 x 1261 mm (roll) 2983 x 2730 x 1261 mm (rigid)
Weight	197 kg (160 kg printer + 37 kg stand)



Watch movie on Mutoh Europe's YouTube channel

